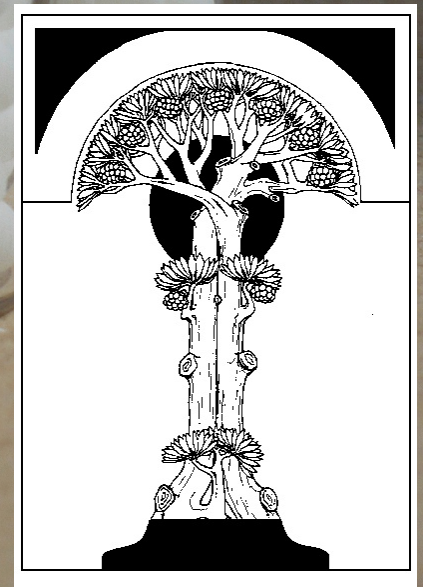


Centre for Integrative Medical Training



Centre for Integrative Medical Training

The Second Prescription

Rx

Granulae: Aurum Metallicum 1M

Sig. Stat

Mitte: 1 g

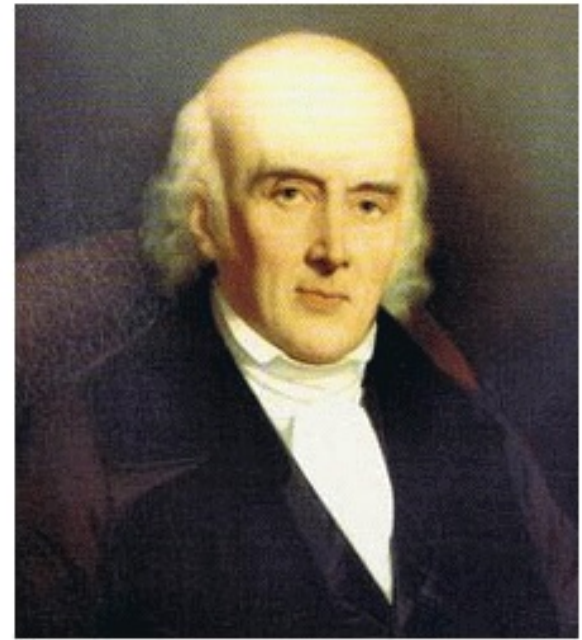
Dr Russell Malcolm FFHom

Centre for Integrative Medical Training

The Second Prescription

Relates to the *Unicist* Prescribing Tradition

ie. Giving only one remedy at any one time.

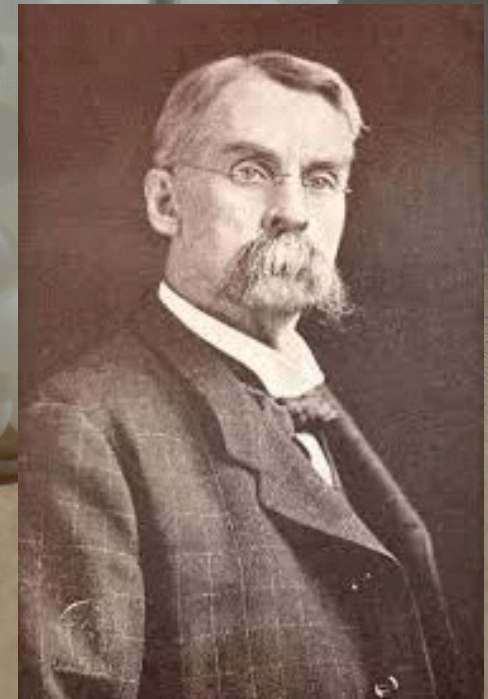


Centre for Integrative Medical Training

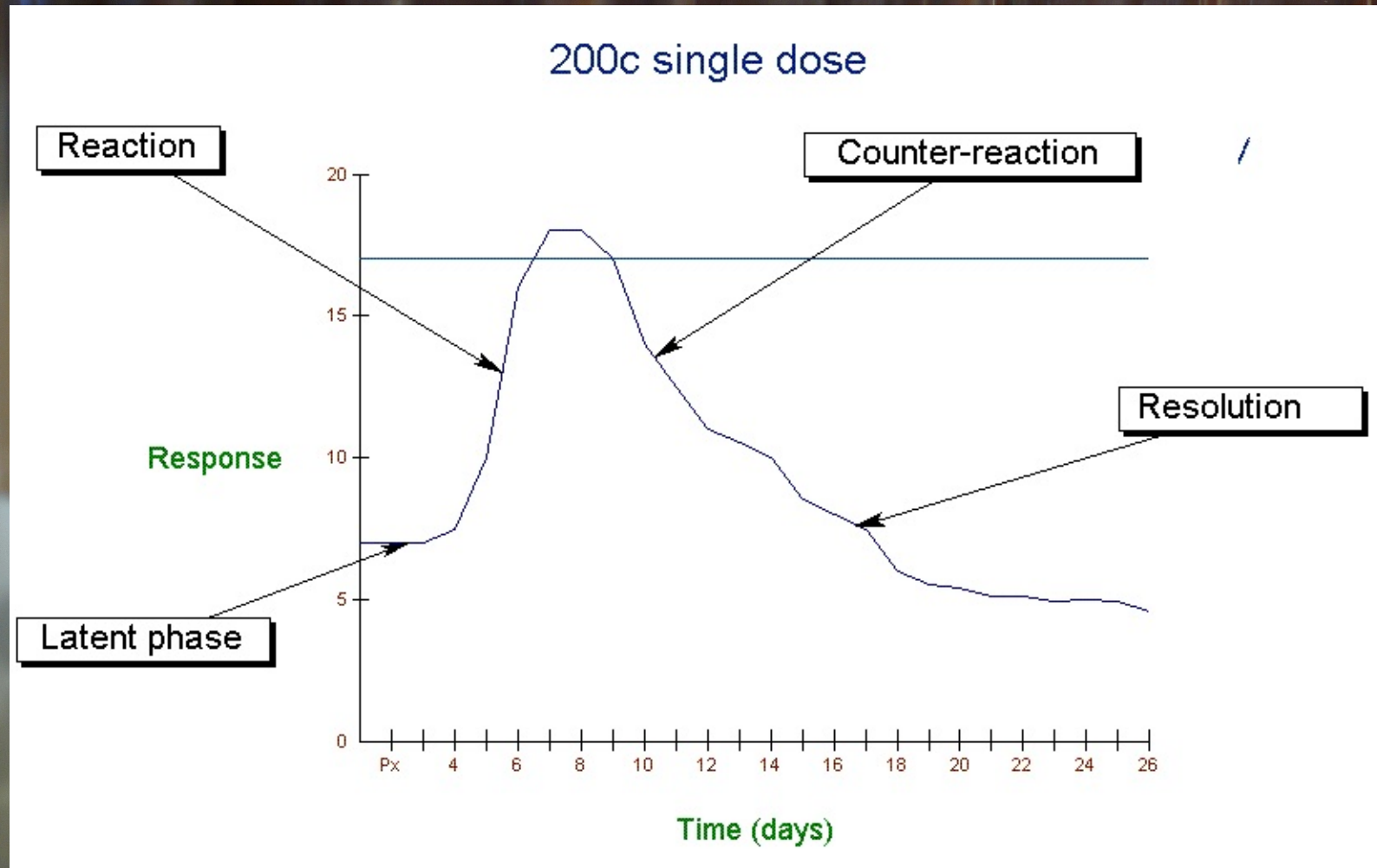
The Second Prescription

Formalised by Kent as a strategic consideration in its own right within prescribing methodology.

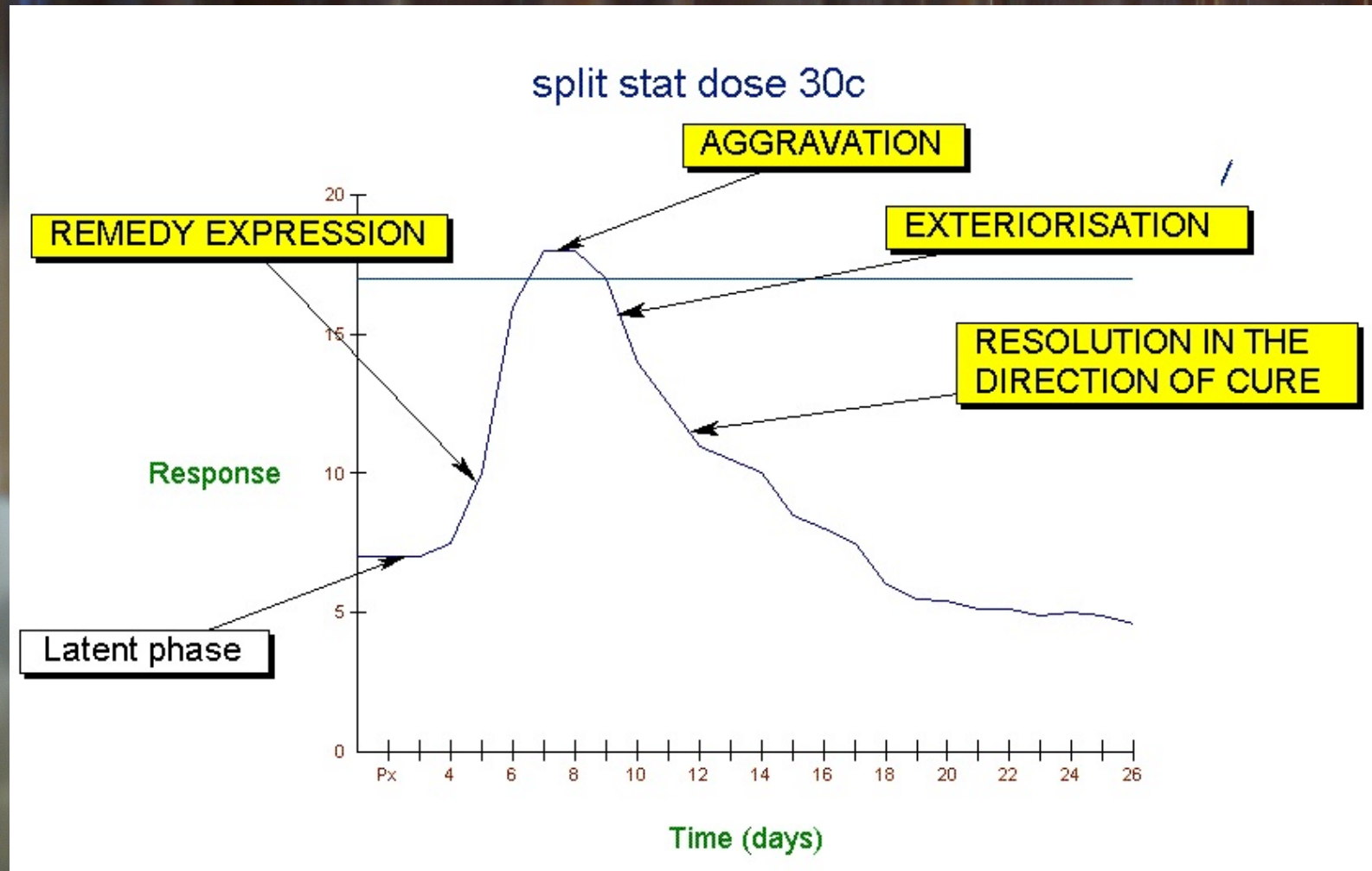
‘ Consider the first prescription the one that has acted, that one that has effected changes, and subsequent to that the next prescription is the second.’



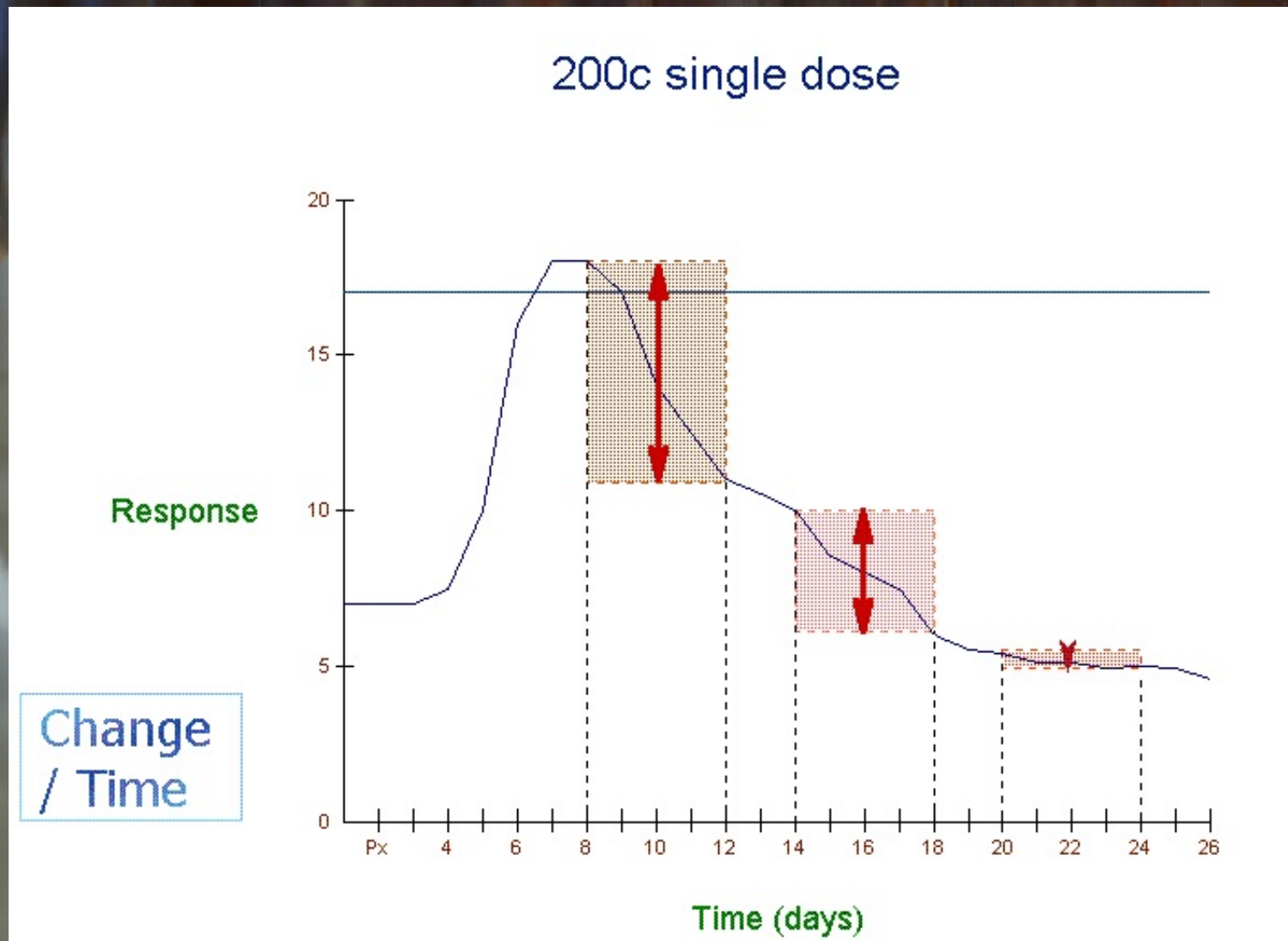
Centre for Integrative Medical Training



Centre for Integrative Medical Training

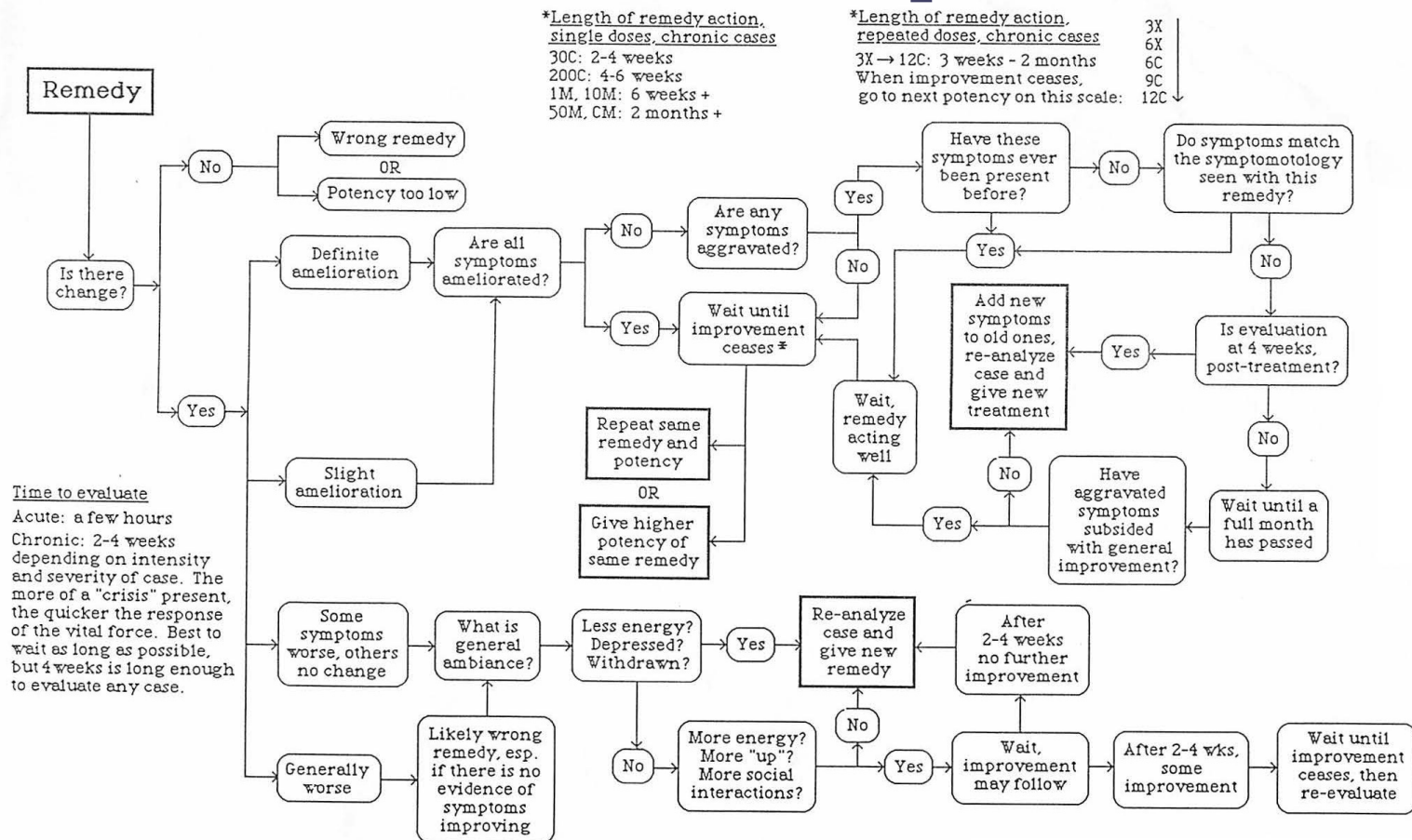


Centre for Integrative Medical Training



Centre for Integrative Medical Training

The Second Prescription



Flow chart by
 Richard Pitcairn DVM

A row of five glass vials filled with white, round pills, arranged on a light-colored wooden surface. The vials are slightly out of focus, with the middle ones being sharper. The background is a warm, brownish-orange color.

Centre for Integrative Medical Training

The Second Prescription

THE EVOLVING APPROACH

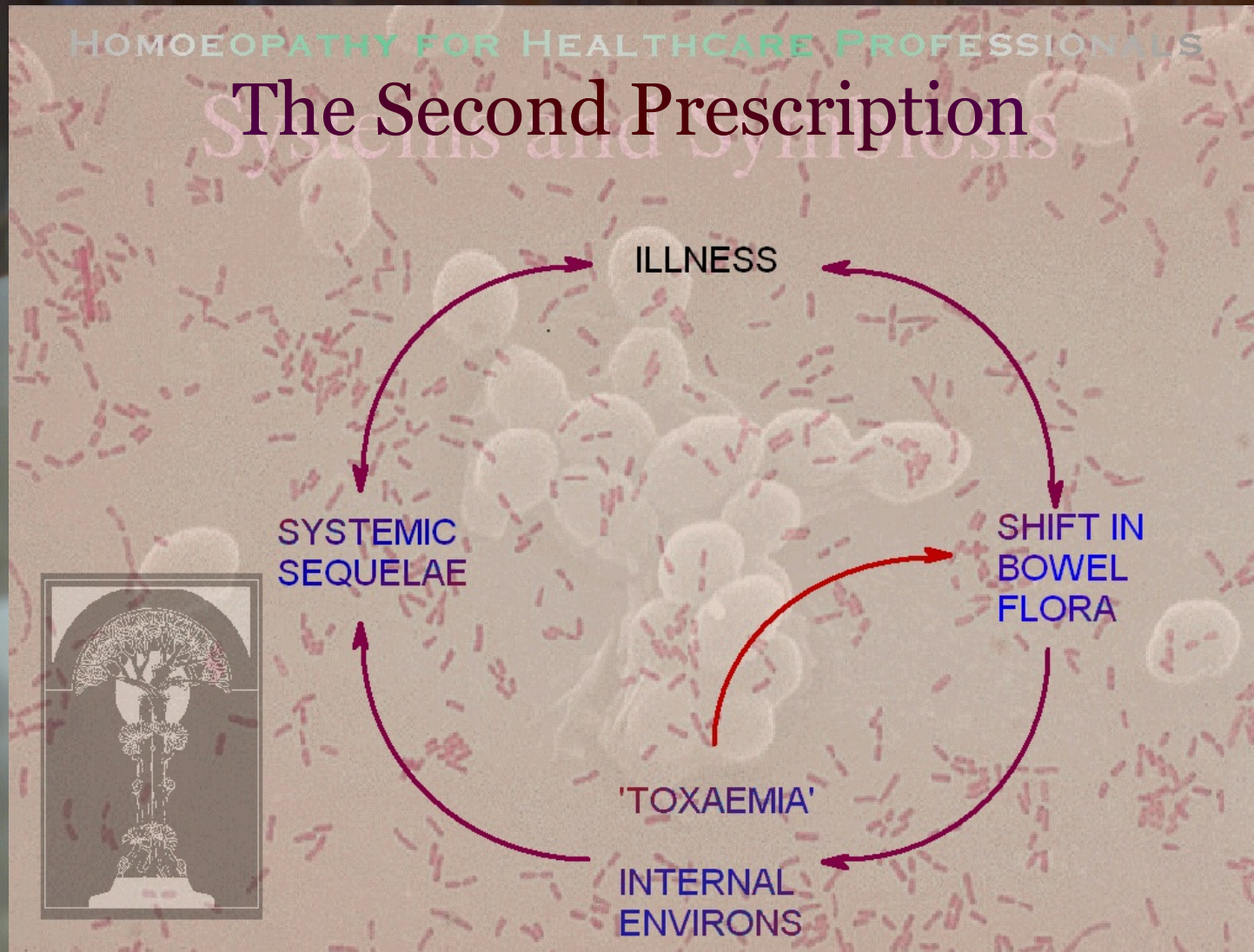
THE STRATEGIC APPROACH

Centre for Integrative Medical Training

The Second Prescription

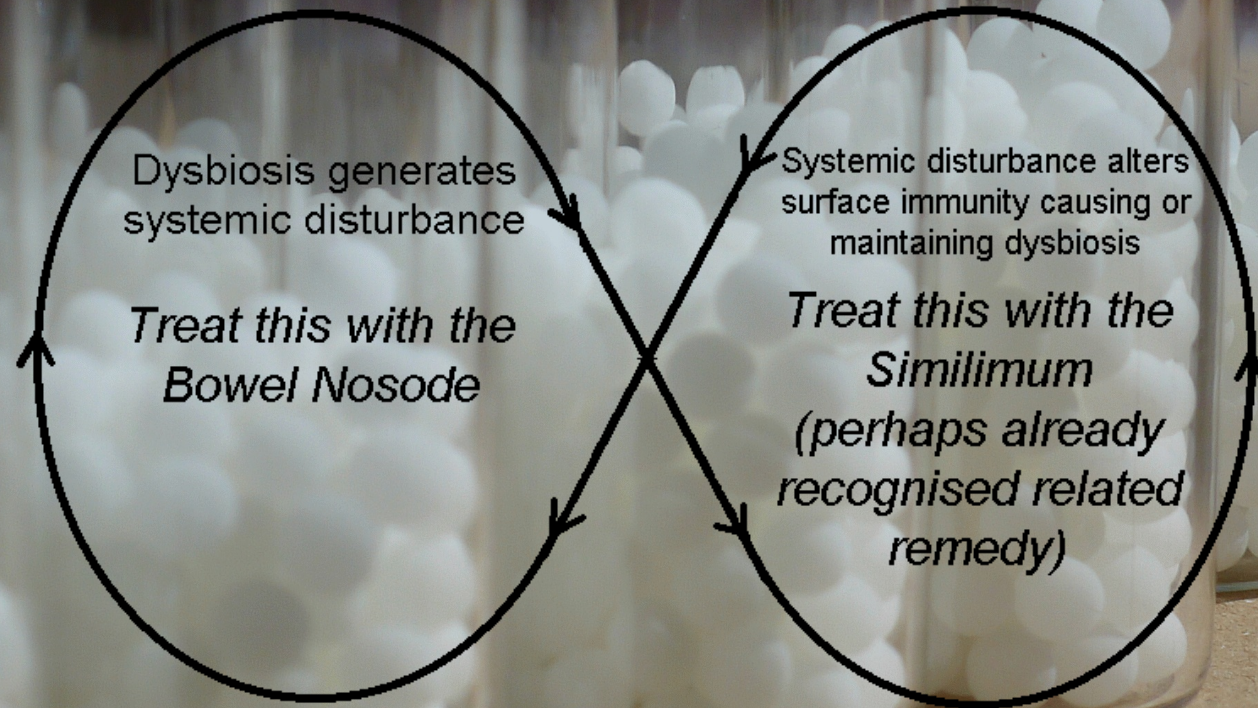
	Aetiological model 'morbid soil' 'never well since'	Symptomatological model 'current state' 'symptom picture'	Perpetuating factors 'intrinsic blocks to cure' 'extrinsic blocks to cure'
Immunological decompensation	Nosode of original infective agent:	Miasmatic nosode	Intestinal nosode
Physiological decompensation	eg. <i>Influenza</i> <i>Epstein-Barr virus</i> <i>Ailanthus glandosa</i> <i>Baptisia tinctora</i> <i>China officinalis</i> <i>Eupatorium perf.</i>	Polarity analysis or other form of repertorisation	Tautopathy: <i>Cortisol</i> <i>Ephedrine</i> <i>Statins</i>
Mental-emotional decompensation	<i>Aconitum napellus</i> <i>Ignatia amara</i> <i>Staphisagria</i>	<i>Asafoetida</i> <i>Scutellaria</i>	Scholten analysis (+/- CBT)

Centre for Integrative Medical Training



Centre for Integrative Medical Training

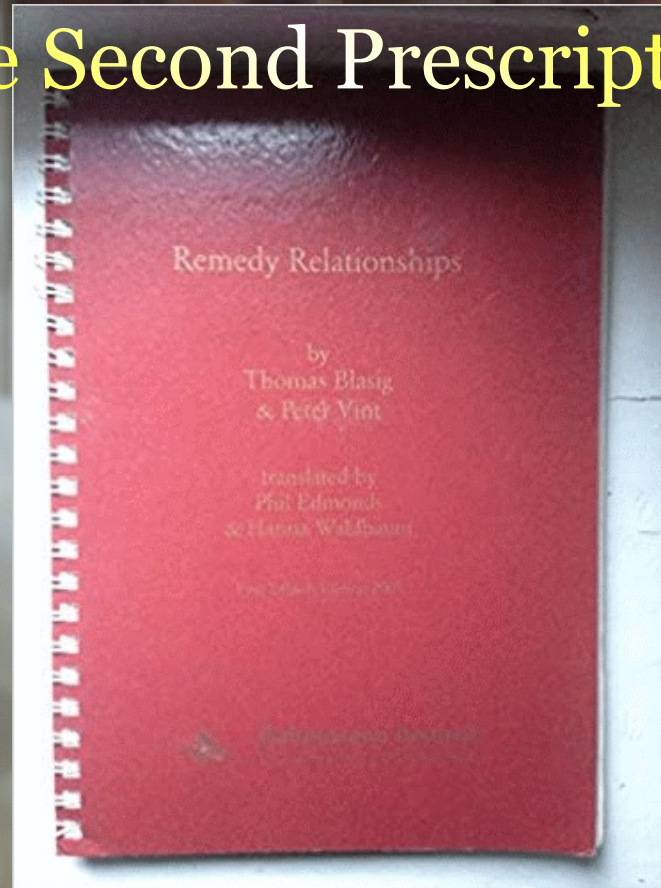
DYSBIOSIS



SYSTEMIC
DISTURBANCE

Centre for Integrative Medical Training

The Second Prescription



Remedy Relationships by Thomas Blasig & Peter Vint, 2001
ISBN 3-929271-26-5

A row of five glass vials filled with white, round pills, arranged on a light-colored wooden surface. The vials are slightly out of focus, creating a sense of depth. The text is overlaid on the image.

Centre for Integrative Medical Training

The Second Prescription

Natural Relationships

Clinical Relationships

Centre for Integrative Medical Training

Repertory_of_Intestinal_Nosodes_v6.pdf - Adobe Acrobat

File Edit View Window Help

Open Create Save Print Mail Tools Fill & Sign Comment

66 / 112 143%

Nosode - Remedy Relationships

1. *Bacillus* No.7

Grade	Clinically Related Homeopathic Remedies
5	KALI-I.
4	Bry., Caust⁸, Rhus-t⁸.
3	<i>Abrot., Ars-i², Aur., Calc⁸, Calc-f⁸, Calc-i², Chin-s., Eup-per., Guaj., Iod², Kali-c⁸, Kali-i², Kali-p., Kalm., Lachn., Polyg., Ran-b., Rhod., Rhus-v., Ruta, Senec., Stel., Sul-i., Sul-ac., Zinc</i>
2	<i>Alum., Ars., Ars-s-r., Brom², Chin-ar., Elat., Euph-m., Ferr-i², Fl-ac., Gamb., Ichth., Kali-ar., Kali-fcy., Led., Merc-i-f., Mez., Mur-ac., Nat-i², Nux-v., Osm., Ph-ac., Plat., Stann., Tab., Tell., Ter.</i>
1	<i>abies-c., abies-n., aloe, am-br., am-c., anac., ang., ant-c., apis, arg-n., calc-ar., caul., chin-b., dros., dulc., (Dulcitol), euon-a., ferr., form., gels., glucose, grat., hydr., <u>kali-bi²</u>, <u>kali-br²</u>, kali-m., <u>kali-n²</u>, kali-sil., kali-s., mang., merc., merc-c., <u>merc-i-r²</u>, nat-ar., nat-c., nat-m., nit-ac., ox-ac., petr., phos., podo., psor., sabad., sabin., sang., sil., staph.,syph., thuj., thyr., zinc-i.</i>

Centre for Integrative Medical Training

METHODS OF ANALYSIS

including various
repertory techniques

TREATMENT STRATEGIES

considerations
of the balance between
the allopathic and
homeopathic options

DISEASE MODELS

including diagnoses
and other illness
concepts

PRESCRIBING STYLES

remedy choice
potency choice
posology
timing and review choices

