

Centre for Integrative Medical Training
In Association with London Integrated Medical Health Education



Pre-membership Course in Homeopathic Pharmacy

A Blended Course in Homeopathic Medicine for Healthcare Professionals

Units 45-46

PHARMACY STUDIES Weeks 1-2

Centre for Integrative Medical Training
Pre-membership Course in Medical Homeopathy - Pharmacy

Semester 1 Contents - Weeks 1-6:

Weeks 1-2 An Introduction to the Basic Principles of Preparing, Dispensing & Storing Homeopathic Remedies	4
Dispensing NHS and private prescriptions	5
Medication	6
Dosage	7
Dispensing single dose sachets of fine or coarse granules	8
Storage and contamination problems	9
Interpreting a request for a homeopathic remedy	10
Prescription examples	11-16
Setting up a range of remedies	17
	19
Weeks 3-6 HOMEOPATHIC PHARMACOPOEIA	20
The First Pharmacopoeias	21
Historical journal articles on Homeopathic Pharmacy & Pharmacopoeia	22
The first British Homeopathic Pharmacopoeia	23
The evolution of homeopathic preparation methodology	23
<i>Trituration</i>	24
<i>Potentisation</i>	25
<i>Medication</i>	25
<i>Remedy sources</i>	26
<i>Mother Tinctures</i>	26
Hahnemann's Methods and the German Homeopathic Pharmacopoeia	26
Method 1	26
Method 2	27
Method 3	28
Method 4	29
The British modifications of 1870	31
The new method today	32
Method for high moisture plants	32
<i>Example: monograph for Arnica</i>	33
Example monographs: 1. PLANT SOURCE	34
Journal articles on quality control and standardisation of plant tinctures	36
Example monographs: 2. INORGANIC SOURCE	37
Example monographs: 3. ANIMAL SOURCE	37
Journal articles on pharmacopoeia	40
Good Manufacturing Practice	42
Journal articles on quality control	43
	44
Reference Textbooks	45

Homeopathic Pharmacy - An Introduction to the Pre-membership Course

Introduction

Welcome to the Pre-membership Course in Homeopathic Pharmacy. We hope that you find this course makes a positive and stimulating contribution to your daily work. The content of each course day has been selected to both deepen your knowledge and help you develop the practical skills that you will need to provide a specialist pharmacy service.

Course Aims

Now that you have successfully completed Intermediate Level, you will understand that there are several facets of this discipline that need to be developed in the units that follow. By the time you have completed the pre-membership course you should have attained:

- ▶ an extensive theoretical understanding of what homeopathy is, and a knowledge of its potential role and limitations.
- ▶ demonstrable facility in a number of defined practical skills (see objectives below)
- ▶ the ability to improve client care through safe, accurate over-the counter prescribing
- ▶ full understanding of the boundaries of competence appropriate to your level of training
- ▶ an understanding of the wider interdisciplinary implications for homeopathy within medicine

You will have a significant degree of choice concerning how much of the clinical programme you wish to follow. If you wish you can concentrate on the therapeutics and P&P studies this semester alternatively, you can follow the self-learning in the Pharmacy Units and Parallel Reading. Together these should provide you with a structured programme of self-directed learning and we can provide you with guidance on the practical aspects during tutorials and Question and Answer Sessions.

In addition to the content of the core study texts, you will need to complete both the recommended background reading and the set assignments, in order to achieve the learning objectives below:

References

- Ainsworth JB, *B.H.A. introductory pharmacy course*, Homeopathy 1991 Apr;41(2):30-3
Ainsworth JB *The place of the pharmacist in homeopathic medicine*, Proc 35th LMHI Congr,Sussex,UK, 1982, :227-234,
Cook TM, *The training of pharmacists in homeopathy*, Br Homoeopath J 1980 Jul;69(3):163-4
Kayne S. *Homeopathic pharmacy - education, research and optimism*. Br Homoeopath J, 1993, Oct;82(4):225-6
Kayne S. *Survey on the teaching of complementary medicine in British schools of pharmacy*. Br Homoeopath J, 1993, Jul;82(3):172-173
RLHH. *Membership in Homeopathic Pharmacy Curriculum*. Academic Departments Royal London Hom. Hosp. 2000
Faculty of Homeopathy. *Syllabus for Training in Homeopathic Pharmacy* 2000

Learning Objectives for the Pharmacy Pre-membership Course

Homeopathy is a highly developed discipline with a long heritage. It has many implications for modern medical science and health care delivery. Because its precepts and mode of application are distinct from other aspects of pharmaceutical practice, a true grasp of homeopathic pharmacy requires detailed knowledge of manufacturing and dispensing methods and a number of corollary skills.

The following summary checklist will be reproduced at the end of the course to allow you to consider whether you are ready to apply for MFHom (pharm.) examination. Please refer mainly to the Faculty's *Guidelines for Candidates*.

KNOWLEDGE - You require:

- Complete familiarity with all the basic precepts which define homeopathy
- A conceptual base of relevance to the homeopathic treatment of specific acute conditions
- Knowledge of the main indications for a defined range of homeopathic medicines
- Knowledge of treatment outcomes and their implications for further client advice

APPLIED KNOWLEDGE - You should be able to demonstrate:

- familiarity with the principles governing the manufacture of homeopathic remedies
- facility in the handling and dispensing of homeopathic remedies.
- basic knowledge of homeopathic treatment methodologies
- ability to provide clear, accurate and relevant directions for treatment
- the capacity for self appraisal, audit and heuristic professional development

SKILLS - You should be able to:

- gather information that is effective in the selection of appropriate homeopathic OTC treatments
- display well developed interpersonal and observational skills suitable to the discipline
- recognise symptomatology and patterns of response of homeopathic significance
- safely integrate the homeopathic and orthodox knowledge base
- accurately interpret and safely dispense homeopathic prescriptions

ETHOS - You require the qualities of:

- openness to critical self-audit as part of an ongoing learning process.
 - qualities of attitude (an ethos of commitment, caring, professionalism, & integrity)
- and:
- cogniscence of the legal and regulatory aspects of homeopathic pharmacy
 - conformity in your work with the standards of practise laid down by your statutory body

WEEKS 1 & 2

**An Introduction to the Basic Principles of Preparing, Dispensing
& Storing Homeopathic Remedies**

John Morgan

Objectives:

At the end of this section you should:

- know how potencies are prepared
- know how to medicate solid dosage forms
- be able to read and dispense prescriptions
- know how to handle and store remedies to avoid contamination and antidoting factors
- be familiar with the most convenient and economical ways to build up a stock of remedies

Dispensing NHS and private prescriptions

Dosage forms

Homeopathy has been fully incorporated into the National Health Service by act of Parliament. At this stage you may have been asked to dispense NHS homeopathic scripts as part of your day to day workload. The procedures involved in the dispensing of homeopathy are already largely familiar to you since they are very similar to those required in orthodox practise. The nomenclature of most prescriptions will be familiar to you, although dosage forms and directions involve an understanding of some basic principles.

Potencies are mainly dispensed in solid form but are also sometimes used in liquid (usually 20% ethanol) for oral use.

Solid dosage forms are based on sucrose and lactose in various sizes. Efficacy is not affected by the form and it is chosen for the convenience of the patient.

The dosage forms commonly used are as follows:

Flat tablets (50% sucrose/50% lactose) are the most common and are quite hard, easily medicated (wetted) and can be sucked or chewed. They are most commonly used for adults.



Flat tablets

Pillules are usually made from pure sucrose, are hard but very soluble and easily medicated. Used for all ages except infants.



Pillules

Lactose only tablets, or trituration tablets are made from pressed lactose powder and are very quick dissolving. Very useful for all ages, animals but especially infants and small children as there is no risk of choking.

Granules are tiny sucrose balls and are usually used for babies.

Powders are individually wrapped lactose packets and are used for all ages when just a few doses only are prescribed.

Liquid remedies are very suitable for babies and animals but are preferred by some adults if there is sugar intolerance.

Mother tinctures are often prescribed either internally or externally and are taken in drop doses in water.

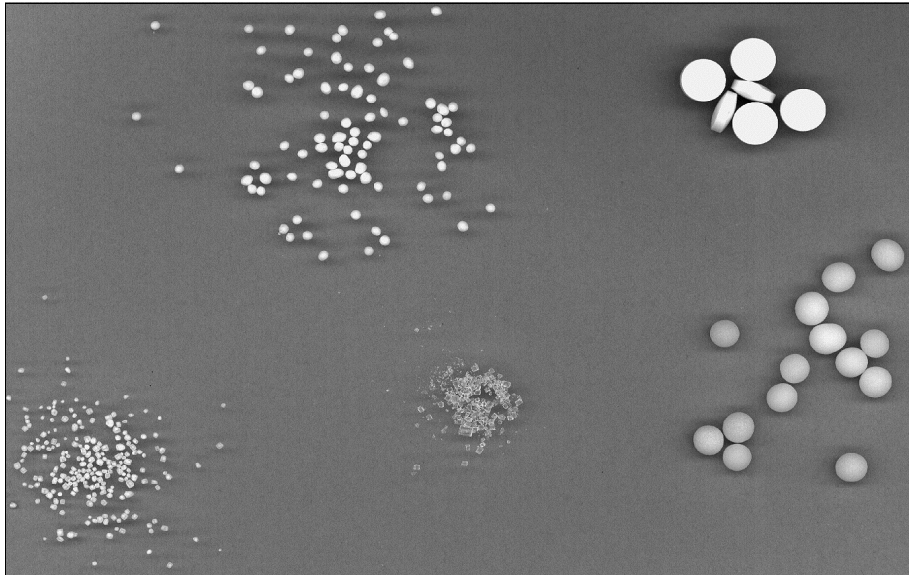


Mother tinctures

Creams and ointments are commonly used and contain mother tincture (3-5%) as the active ingredient in an aqueous or lanolin base.

Medication

Medication or impregnation is a technique which consists in fixing a homeopathic liquid potency on a solid dosage form. The liquid potency is considered as the active ingredient for homeopathic remedies. Hahnemann prepared his remedies in sucrose granule form and medicated them by filling a bottle of granules to the brim with the alcoholic potency, draining the excess out and drying the remainder on a filter paper. This has been modified over the years to simply add enough medicating potency to wet all the tablets, pills or granules etc.



Solid dosage forms

For practical purposes 1% v/w is a suitable guide given by the American and German pharmacopoeias for medication. Thus on a small scale e.g. a 2g bottle of tablets is suitably wetted by 1 drop of potency. This can be used as a minimum guide for larger quantities. As the strength of alcohol is above 70% (87-95% is the optimum) then there is no risk of disintegration of the tablet, even for the soft lactose tablets. Powders are medicated by adding one drop to the outside of the powder. The medication soaks through and wets the lactose inside.

Liquid potencies are medicated by using 1% of the potency even though a further dilution, but without succussion, occurs. e.g. 5 drops in 10ml. For very low liquid potencies the correct proportion should be used e.g. 1ml of 2x to 9ml diluent to create 10mls of 3x potency followed by a succussion.

Journal references on solid dosage forms

Walgate S, *The question of machine made tablets of homeopathic medicine*, Homeopathic World 1919 Nov;54(11): 436-437

Braun A, *Die homöopathischen Globuli. Ein Beitrag zu Ihrer Geschichte*, Allgem Homöopath Zeit 1987 Sep-Oct;232(5):192-6

Dubost JP, Guillemain J, *Comparison of the kinetics of release of picric acid from two different types of homeopathic granules* (French), Ann Pharm Fr 1984;42(4):323-8

Dosage

For tablets and pills, only one is necessary as a dose at any one time. There is, in fact, no clinical difference between taking one or two tablets. The same stimulus is received, regardless of the physical size of the dose, and so frequency of administration is a more important determinant of effect. The frequency of the dose is therefore a much more important consideration in prescribing.

For liquid potencies the same principle holds true, although mother tinctures (which are much more material in their content) require more precise attention. The most common dosages used here are 5 - 10 drops in water two or three times a day.

Powders are often given as single or split doses (i.e. 2 or 3) and are usually taken within 24 hours only. Remedies are absorbed via mucus membranes, Hahnemann described it as via 'the nerves in the mouth', so each dose should be held in the mouth or put under the tongue for at least a minute or two.

It is possible that there are drug-receptor interactions in the mouth*. It is for this reason that remedies should be taken on a clean tongue at least 15 minutes before or after food. Olfaction of the alcoholic vapour of the potency is also a method for administering a remedy but is rarely used.

(*Although the final remedy effect is unlikely to be due to the same kinds of agonistic/antagonistic phenomena, at these particular sites, as are postulated for standard pharmacology).

Journal References on Dispensing Precautions

[Handle your medicine carefully](#), (pharmacy, drug packaging) *Homeopathy* 1971 Jun;21(6): 68-69

Self Study & Parallel Reading

Study the following section in your companion text: pp 52-55 *Homeopathic Pharmacy*: S Kayne

Can you name the main solid dose forms ?

Can you give examples of other dose forms?

Dispensing single dose sachets of fine or coarse granules

Some large pharmacies make up stocks of blank sachets using a machine. These can be medicated directly and are suitable for short term storage only. Most pharmacies prefer to dispense in glass bottles, even for single or split dose regimen, with appropriate dosage instructions on the label. Sometimes, however, it is necessary to manually fold sachets of medicated granules as below.

Please note the dispenser below should not be holding the remedy paper using the medicating surface in steps 1-6. It is better to pinch a partially folded paper at one end from below. This creates a trap for the granules. Otherwise they roll into contact with your finger, or onto the floor!!



Self Study & Parallel Reading

Study the following section in your companion text: pp 58-62 *Homeopathic Pharmacy*: S Kayne

Storage and contamination problems

As homeopathic remedies are materially extremely dilute it is important to be aware of conditions which may adversely affect the remedies during dispensing or storage. Any physical contamination will affect them and it is very important that there should be no contact of remedies with contaminated glassware or apparatus and breaking bulk is not recommended.

Contact contaminants

Do not use tablet counters or triangles unless they are washed thoroughly and blanched with boiling water. Although quite robust, medicines have still been seen to work when put into water troughs in cow sheds! Every effort should be made to not handle them or expose them to physical impurities and it is best for patients to transfer the tablet into the cap before taking it.

Volatile contaminants

Essential oils, perfumes and other strong smelling reagents or drugs are particularly invasive and should be kept well away from homeopathic dispensing areas. Odours from the morning coffee are also to be avoided. Beware that many cleaning agents and bleaches contain volatile solvents. These are best avoided in the pharmacy during working hours. Encourage cleaning staff to use simple detergents. If solvents or volatiles are required, they are best used at the end of the working day, after the day's dispensing work has been done. This gives them time to disperse before dispensing recommences.

Energetic and electromagnetic influences

The molecular and quantum representation of the remedy is likely to be vulnerable to breakdown by heat (the exact temperature is unknown, but prolonged temperatures above blood heat should be avoided). Storage under 30°C is the guide for good manufacturing practise.

Ultra violet from direct sunlight is also to be avoided and is thought to deactivate remedies. The influence of X-rays at airport terminals are as yet unknown and it is hard to give a definitive answer. Some homoeopaths believe that they have noticed a detrimental effect and others are equally sure that there is not a problem passing through x-rays. Perhaps, like the human organism, the answer is dependant on the number of exposures. In the absence of a device to objectively measure activity within potencies, the full answer to this question will take some time to emerge.

Electromagnetic fields around electrical and computer equipment are best limited by avoiding the siting of electrical equipment close to remedy storage cabinets. Apparatus should have adequate screening within their enclosures. Some pharmacies have earthed plates installed in the walls of their storage cabinets.

Reference on Pharmacy Organisation & Contaminants

Efstathiou Y Kiprianou K Kalamara A Hiliopoulos S. [*Organisation and structure of a modern homeopathic pharmacy*](#). Proc 43rd LMHI Congr, Athens, Greece, 1988, :181-184

Zacharias CR. [*Contaminants in commercial homeopathic medicines: a spectroscopic determination*](#). Br Homoeopath J, 1995, Apr;84(2):71-4



Metal cabinets provide screening

Interpreting a request for a homeopathic remedy

As with any prescription the drug name, strength, quantity and dosage are usually present. Many remedy names will be unknown to you at this stage, because of the many hundreds that are in common use. In view of this, a good Materia Medica such as Boericke is highly recommended as a reference book. It has both common and Latin names for over 800 remedies.

Caution: Many names are similar and commonly confused e.g. Cina and China, Alumina and Alumen, and many plants have two species commonly used e.g. *Veratrum Album* and *Veratrum Viride*.

There are also a few commonly used combination remedies which are asked for by letters only. e.g. ABC (*Aconitum napellus*, *Belladonna*, *Chamomilla*) for teething, AAA (*Argentum nitricum*, *Ambra Grisea*, *Anacardium orientale*) for pre-exam nerves, AGE (*Arsenicum iodatum*, *Gelsemium sempervivens*, *Eupatorium perfoliatum*) for influenza

The potency should be easy to identify in the absence of any dilution scale guidance. The x or d suffix denotes a decimal scale potency. c or cH indicates the centesimal 'c' scale. A centesimal potency is also inferred when no potency suffix is supplied (eg. Puls. 6 = Pulsatilla 6c)

The dosage form will usually be stated, but infer tablets if not. Unusual forms are stated, but practitioners obviously will need to be contacted if in doubt. Patients themselves can also be very helped, if they are familiar with what they usually have.

The quantity is less accurately stated than in most conventional prescriptions and it is common to express the quantity in gram size rather than number of tablets. Even if the number of tablets is specified, it is recommended that you give the nearest original pack, i.e. bottle size, rather than counting out tablets for the reasons already given.

most common dispensing quantities

7g. = approximately 60 tablets (8g for some manufacturers)
14g = approximately 120 tablets

less common dispensing quantities

2g for some portable remedy kits
25g, 50g, 100g, 250g, 500g usually stock quantities

Journal articles on Homeopathy in the Community Pharmacy

Ainsworth JB, *Homeopathy and the community pharmacist: part 1*, Homeopathy 1990 Oct;40(5):131-2
Gay S, *Making the most of your pharmacist*, Homeopathy 1991 Apr;41(2): 41-44
Glew J, *A day in the life of the pharmacist*, Homeopathy Today 1991 3(1): 9-11
Glew J, *A day in the life of a homeopathic pharmacist*, Health Homoeopath, 1993, Summer;5(3):21-23
Kayne S, *Homeopathy and the community pharmacist*, Chemist and Druggist, 1993, Oct:6-8
Pinkus AS, *Homeopathy for the pharmacist*, Homeopathy 1990 Jul;40(4):117-20

Prescription examples

Example 1

	□□□□ □□□	
<p><i>Crataegus</i> ∅</p> <p>Mitte: 100mls</p> <p>Sig: 10 gtt tds ex aq</p>		

Notes

This is a prescription for a mother tincture and the ∅ sign is commonly used. Sometimes M.T. is written instead.

Crataegus is a common remedy for arteriosclerosis, high blood pressure and irregular heart beat and like all mother tinctures is given in water due to its high ethanol content and strong taste.



There is no need to take tinctures away from food and drink as their action is a material herbal stimulus and can be safely repeated for months if needed.

Example 2

	□□□□ □□□	
Lycopus Virg. 1x Mitte: 25mls Sig: 10 gtt om ex aq		

Notes

The 1x potency referred to here is a common area of confusion amongst even experienced homeopathic pharmacists. It is important to know what strength is expected by the prescriber - contacting them if in any doubt.

Very few homeopathic practitioners are aware of the fact that mother tinctures are formulated to be 1 in 10 i.e. 1x already and 1x requests expect a dilution of mother tincture one in ten. This prescription is prepared by diluting 2.5mls of mother tincture to 25mls of a low (25%) alcohol solution.

Care is taken to observe there is no precipitation when diluting. If this occurs then an alcoholic solution nearer to the same strength as the mother tincture is required.

This remedy *Lycopus virginicus* is another phytotherapeutic treatment, commonly used long term for heart conditions where there are palpitations and valvular disease.

Example 3

	□□□□ □□□	
Lycopodium 200/1M/10M Mitte: iii pulv Sig: nmen		

Notes

This is an example for the use of powers to deliver three doses of differing potency. Three powders are prepared and numbered 1, 2, & 3. They contain one drop of *Lycopodium clavatum* 200, 1M and 10M respectively.

Lycopodium clavatum is a deep acting medicine and is an example of a polychrest remedy. It is often prescribed on a 'constitutional' basis and may continue to act for several weeks, or even months, without repetition. It has been carefully chosen to cover all the symptoms of the patient thus treating the whole person and if successful will have a very deep curative reaction.



Due to the need to take the powders in sequence the ideal directions would be:

'One powder to be dissolved under the tongue tonight, tomorrow morning and night in order numbered.'

Example 4

	□□□□ □□□	
Thuja 10M 1-3		
SL 4-21		
Sig: 1 om		

Notes

This again specifies numbered powders but with only *Thuja occidentalis* 10M medicated on powders 1 to 3. The rest are blank *saccharum lactis* (SL; sac. lac.; sugar lactate) ie. placebo.

Practitioners quite often give the patient something more substantial than the incredulous 3 doses only. Sometimes another remedy is added, say from powders 22-24 and SL continued to 50 powders. These are common ways of controlling the timing of active doses in a way that is comprehensible and convenient to the patient.

Example 5

	□□□□ □□□	
Zincum Met 12		
Mitte: 100		
Sig: 1 bd		

Notes

In this example the centesimal scale is inferred with just the number for the potency.

The quantity is given in detail but an OP nearest to it is recommended. Prescribers often put a size they know from the pharmacy they use, but most manufacturers have a size near to 100 tablets for example. If OP is put on the prescription for the quantity, then a month's supply or convenient pack size (e.g. 100 or 125 tablets as in most OTC remedies) is used.

The dosage form could be tablets or pills - if not stated there is usually no preference but check with the prescriber if in doubt.

If the directions 'take 15 minutes before or after eating or drinking' can be put on the label, after the 'one to be taken twice a day' or at least communicated to the patient, so much the better.

Example 6

	□□□□ □□□	
Chamomilla 30		
Mitte: 8g grams		
Sig: 1 dose prn up to qds		

Notes

Here is a common preparation for teething babies and granules are an excellent way of administering a dose.

As one granule is very tiny, the recommended amount for a dose is enough granules to cover the bottom of the cap, in this case when required up to four times a day.

(‘Chamomilla’ indicates *Matricaria chamomilla*. This highlights the problem of changing plant nomenclature and the use of abbreviated terms of convenience. Other common homeopathic contractions include: Belladonna (*Atropa belladonna*), Stramonium (*Datura stramonium*). There are unfortunately many others. Moves are afoot internationally to update remedy names and achieve a consensus on their terminology.)



Chamomilla

Journal articles on prescription dispensing

Challis SJ, *Homeopathic hospital pharmacist*, Br Homoeopath J 1977 66: 190
Male RR, *Dispensing homeopathic chemist*, Br Homoeopath J 1977 66: 193

Setting up a range of remedies

The degree to which you introduce homeopathic remedies into the pharmacy is obviously dependant on your enthusiasm for it and the demand from your customers. The easiest way to start is to introduce a retail range from an established manufacturer. These are usually in a display stand of between 18 to 36 licensed remedies. These usually have literature or first aid kits associated with them. You should study the remedies in the range quite thoroughly. It is surprising how many counter prescribing requests you can cover with a good knowledge of just a few well known remedies.

With the ever growing demand for homeopathy it is likely you already have a shop range in place and want to go further. If you need to have access to a wider range of remedies then there are homeopathic manufacturers who can supply thousands of different remedies as 'specials', for dispensing and counter prescribing.

Buying remedies as original packs is the easiest way to manage your stock. Cross contamination policies are necessary when breaking bulk. This is more realistic in larger pharmacies where the division of labour means that staffing costs are low enough to justify both staff time, and the implementation of contamination precautions. Considerable storage space and cataloguing is needed for even 100 common remedies stocked in 3 or 4 sizes and potencies, e.g. 6, 30, 200, 1M. This can be an extra space pressure in a small dispensary.

If supporting a local practitioner then their remedy preferences will soon become apparent. Next day supplies from manufacturers is the norm for pharmacies, so even new remedy requests can be quickly accommodated.

Some pharmacies prefer to buy high alcohol medicating liquids and placebo tablets. This allows them to assemble remedies themselves, by simple medication of dosage forms, in house. This option requires more initial investment but provides flexibility and cuts down storage. It is also more economical in the long term, although slightly more labour intensive.

One bottle of 100 drops of potency can medicate many small bottles of tablets and so much of the cost of a finished remedy is the labour involved. If in house medication is chosen as an option it is desirable to have a area separate from the conventional dispensing activities as contamination and antidoting factors must be considered when high alcohol potencies are used.

Good training is vital and a simple written procedure manual is recommended for reference. e.g. it is recommended that only one medicating potency is open at a time. Open bottles should never be brought into close proximity with another containing a different remedy. Being volatile and flammable, ethanol spillages need immediate attention.

Some extra apparatus such as test tubes, stoppers, storage boxes or drawers may also be necessary. This approach, although more involved, is enjoyable and practical giving one the satisfaction of a more hands on approach. However large the step or investment into homeopathy, it is fascinating and rewarding for pharmacists and much appreciated by benefiting customers.

Self Study & Parallel Reading

Study the following section in your companion text: pp 65-76 *Homeopathic Pharmacy*: S Kayne

Summary Checklist for Weeks 1 & 2

Before proceeding to the next section check that you:

- know how potencies are prepared
- know how to medicate solid dosage forms
- are able to read and dispense prescriptions accurately
- know how to handle and store remedies to avoid contamination and antidoting factors
- be familiar with the most convenient and economical ways to build up a stock of remedies