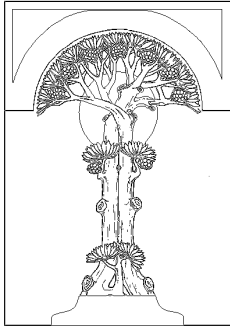


Centre for Integrative Medical Training  
In Association with London Integrated Medical Health Education



# Pre-membership Course in Medical Homeopathy

A Blended Course in Homeopathic Medicine for Healthcare Professionals

---

## Unit 51

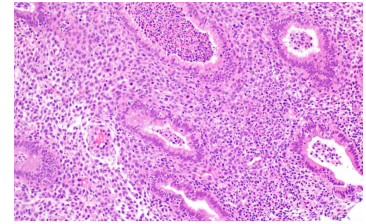
Therapeutic Pointers for Week 7

## *Diseases of the Uterus*

### Endometritis

#### Some rubrics

Female genitalia            inflammation, uterus  
   leucorrhoea, bloody



#### Some remedies

*Apis*,  
*Arsenicum album*,  
*Belladonna*,  
*Cantharis*,  
*Lycopodium*,  
*Pulsatilla*,  
*Sabina*,  
*Secale*

Activity: compare the female prescribing indications for these remedies

**See Also** - Aetiological nosodes, bowel nosodes and:

*Lac caninum* (Dog's Milk)

- discharge during the daytime
- menses early, profuse flow in gushes
- vulval itching

*Terebinthium* (Turpentine)

- intense burning in uterine region
- metrorrhagia with burning in uterus
- uterine diseases after wearing pessaries

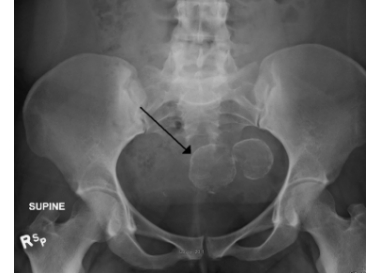


*Secale cornutum* - ergot of rye

## **Fibroids**

Fibroids are a common condition in women, particularly in the years leading up to the menopause. They often present with bleeding irregularities and are one of the most common causes for hysterectomies. Often the growth of fibroids can be arrested with homeopathic remedies and smaller ones may regress.

Large fibroids may still require surgery if they continue to cause problems.



### **Some Rubrics**

Female genitalia, tumours, uterus, fibroid

### **Some Remedies**

*Secale*,  
*Calcarea fluorica*,  
*Conium maculatum*,  
*Silicea*,  
*Terebinthium*

### **See Also:**

*Epiphysterinum* (Nosode made by Burnett)

- profuse haemorrhage

*Lapis albus*

- intense burning pains
- profuse haemorrhage

*Thyroidinum*

- with enlarged thyroid



*Lapis albus*

## ***Uterine Displacement***

### **Some Rubrics**

Female genitalia: prolapsus: uterus vagina  
pain, bearing down  
Abdomen:  
pain, pressing, menses

### **Some Remedies**

*Sepia*,  
*Murex*,  
*Lillium tigrinum*,  
*Argentum metallicum*,  
*Argentum nitricum*,  
*Aurum metallicum*



*Lilium tigrinum* - Tiger Lily

Turn to your materia medica to compare these prescribing indications for these remedies in uterine displacement.

### **Other remedies with specific keynotes**

*Fraxinus americanus* (White Ash)  
bearing down sensation  
uterus enlarged, heavy, prolapsed  
sensitive left ovary

*Tilia europea* (Linden)  
frequent pressure and dragging from groin downwards, as if everything were being pressed out intense sore feeling in the uterus  
soreness and redness of external genitals



*Tilia europea* - Common Lime

