

Centre for Integrative Medical Training
In Association with London Integrated Medical Health Education



Pre-membership Course in Medical Homeopathy

A Blended Course in Homeopathic Medicine for Healthcare Professionals

Unit 55

Therapeutic Pointers for Week 11

The Years of Work & Family

Love & Sex in Long-Term Relationships

In the course of this term you have explored various dimensions of adult wellbeing from the standpoint of women's health. Puberty, adolescence and the reproductive years have been touched upon and discussed in the context of illustrative case studies.



The extent to which these are formative and definitive, in the years of family and work, is hugely variable. Some men and women successfully negotiate their personal and professional lives through various contrasting phases, others settle to a relatively fixed mode of living. Both extremes bring significant challenges.

Narrative Themes

When interviewing patients in their middle years, we need to have a well developed awareness of the narrative construct in which the patient is living. In modern society there are seemingly infinite variations on the age-old human themes of:

- love and sex
- relationships and family
- money and material 'security'
- philosophy of aging and death
- philosophy of the past, present and future self:

ie *How do I define who I am?*

How do I become who I want to be in the time I have left?

Listen to a BBC broadcast:
Sex in Long-term relationships.



If this file does not open and stream from the cloud, please download the file onto your own computer and open it with a media / sound player app.

Compliance or Defiance

All peoples create internal stories for their lives to make sense of these themes. The stories themselves have many cultural variations and often promulgate values that have been handed down for generations. Those who diverge or 'escape' from their cultural roots are faced with possible benefits but also many risks and challenges.

Culture and the Individual

The tensions between a) cultural traditions with the, sometimes chauvinistic, strictures promulgated by them and b) individual life choices, are widely explored in literature and film.

It could be argued that, in tandem with homeopathic studies, literature in the form the novel, is the single greatest resource for human understanding outside humanity's great religious scriptures.

Although narrative poetry in the 21st century has been largely replaced by prose-poetry, the emotional journey of our modern protagonist still evolves in response to specific events, circumstances or challenges - all framed in a historical and cultural setting.

Back in the clinic, our patients also bring a version of their story to the homeopath and usually provide us their interpretation of their own life, albeit with very variable levels of detail and insight.

Over time, you will find that much human suffering is an extension, reaction or compensation for seemingly 'irreconcilable' issues - deep entanglements between two or more unfulfilled and/or dysfunctional 'life themes' (as sketched out in the preceding page)

Time

Time can be used, abused, given away, spent, organised, managed, sold as a commodity, reserved for self etc.

Even in the absence of obvious illness, the middle years usually bring a heightened awareness of time, often to the extent that it becomes a pressured issue.

Patients with a highly pathological relationship to time generate other pathologies over time, often as a result of sacrificial or compensatory behaviours that are unsustainable or simply incompatible with biological, physiological, psychological or sociological wellbeing.

Control 'Freaks'

Feelings of insecurity or vulnerability often gives rise to a 'control' ethos, where patients resort to suppression, management or manipulation as their default response to problems.

This can seem more 'certain' to these patients as they fight for their entitlements, regardless of the unseen costs. In modern life, an ethos of material control, suppression, and the force of will, often displaces other natural, and potentially more sustainable, lifestyle choices.

The engagement of control over adaptation almost inevitably involves some degree of self harm every time it becomes the default response to illness, stress or conflict.



[See rubrics themed around death / attitudes to mortality](#)



Control in Health Care

The medical industry and media itself is culpable when it comes to generating health neuroses in the population at large. An insatiable media provides a willing platform for the health industry. Together they play on society's generally low 'health literacy' to promote, often unnecessary health screening, treatments and forms of symptom suppression, instead of promoting strategies for health through lifestyle awareness and natural medicines.



Interventionist and commercial interests are widely promulgated with the argument that they are based on science. The health care industry itself is a poor arbiter of truth and responsibility, particularly in terms of the choices available to patients.


Individual Narratives and Choice

It is not possible to illustrate all the variations that you will encounter in your caseload over time. Many patient in their middle years become symptomatic in the context of stress arising from interpersonal tensions, compensated behaviours and imposition of control and suppression (medical, creative, sexual, social etc).

Homeopaths seek to understand the individual context for these emergent illnesses. In the final illustrative cases this term, we will explore some of the following themes:

- tensions between sexuality and inculcated beliefs
- tensions between rationality and spirituality
- tensions between conventional and homeopathic treatment
- inter-generational tensions
- tensions between social 'contracts' and personal freedom
- relational inequality - dominance and subjugation

There is a danger of creating generalisations when discussing male and female responses to the middle years of life and their respective 'menopause'. In addition to the biological factors, every long term relationship is unique in terms of the evolved understandings, roles, duties, memories, investments and behaviours.

 [See rubrics relating to marriage & long term relationships.](#)

Nevertheless, the expression of love (and humour) is core to long term bonding and love can evolve, or disintegrate, in the course of the thousands of everyday 'transactions' that take place in a long term relationship - physical, emotional, logistical, sexual and intellectual.

Interest, care, respect and sensitivity - one to the other - can be difficult to preserve when these myriad life choices are negotiated from two different cultural standpoints, perhaps between people

where there are divergent priorities and particularly where there is a mismatch in appreciation for their evolved roles and responsibilities.

The Material Issues

The joint material and financial resources that have been amassed (lost or 'squandered') are often 'elephants in the room' because they have been jointly worked for, or fought for, and they symbolise security (sometimes), aspirations (sometimes) and memories. Material assets may also reflect past/lost enthusiasms and often fulfill some kind of investment function, or are considered a heritable asset that can be passed on to offspring.



In the event that a relationship is strained to its limits, however, the benefit of holding on to joint material assets can be a big consideration in the 'grand equation' of whether to stay together or part ways - this final decision often takes place against a backdrop of unfulfilled desires and aspirations: increasingly urgent priorities that now seem unlikely, to one or other partner, ever to be fulfilled in the context of their existing relationship:

- **creativity,**
- **freedom (eg of expression, choice or movement),**
- **sexual fulfilment,**
- **love / tenderness / intimacy etc**

The perceived emotional, social and material needs of dependent children is, ultimately, the most difficult issue to reconcile when a long term relationship breaks down.

Milestone Anniversaries

Birthdays, particularly the 40th, 45th and 50th can be psychologically traumatic for both men and women, particularly those who are on an inflexible trajectory in terms of their work, creativity or relationships. *Arsenicum album* patients very frequently aggravate around their milestone anniversaries.

Anniversaries and the Status Check

Self-worth is often reappraised on these key anniversaries. To some extent, how each individual copes with a 'status check' on their life depends on whether their self-esteem is based on a narrow base or a more robust 'portfolio' for self-regard.



Common (Narrow) Foundations for Self-Esteem

Material gains, the respect of family friends and acquaintances, kudos (at work or in society):

These are common yardsticks used by men to measure self-worth.

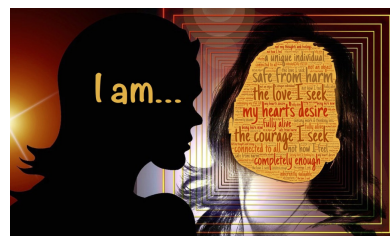
[See rubrics extracted on 'SELF'](#)



Women may also review their material gains as part of an evaluation of themselves. Usually, however, they also measure themselves through the eyes of society, in the context of their roles: mother, wife, worker, professional, community player etc.

Wider considerations for self esteem can include what each individual perceives as the basis of their own 'specialness'. Common attributes include physical and sexual attributes, and 'charisma' in terms of an ability to influence the opinions of others.

Unfortunately, populism in our mass media tends to promote celebrity as a yardstick for 'specialness' when, in fact, engagement with the fantasy world of celebrity culture actually leaves less time for the evolution of the wisdom, knowledge and skills that ultimately provide a more solid basis for personal self-esteem.



Healthier Foundations for Self Esteem (?)

More complex self assessments of self-value, however, are associated with endeavour and creativity eg. in science, art, media or business. Those who have established a position in one of these fields and, most importantly, who continue to innovate and create, are likely to have greater resilience as they take stock of themselves at milestone dates in their lives.

Beware, however, that material attainment in the absence of well developed interpersonal feelings, love, friendship or spiritual awareness, can lead to feelings of isolation and despair (Aurum met)

The Mid-Life Crisis

Any of the following can tip a general and undefined 'unhappiness' into a mid-life crisis. This crisis can be almost existential in nature and often 'comes to a head' on, or around, a 'milestone anniversary':

- unfulfilled creative aspirations,
- a perceived lack of recognition or appreciation*,
- entrapment in a mundane or inflexible role,
- sexual, romantic or emotional boredom,
- portents of physical aging, loss of youth or sexual attractiveness,
- loss of influence over, and relevance to, offspring (ie the loss of parental roles),
- disappointment* in partners and / or the relationship,
- perceived failure in business* etc
- corollary depression in partners with a loss of communication*, tenderness, and / or
loss of the physical expression of care, love or attraction.

[See rubrics relating to sexual desire.](#) 

Activity

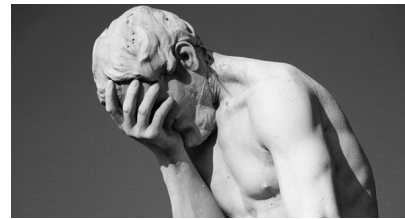
If you have access to Kent or Synthesis find rubrics containing the key-words * above. If you have a computerised version, use the keyword search tool to perform a rubric extraction, similar to the ones provided on pages 8-15.



Compensatory Behaviours or 'Losing it' (?)

An acute sense that time is running out can lead to 'now or never', scenarios for either, or both, partners in a long-term relationship.

These 'now or never' decisions sometimes lead to sudden risk-taking. And some of these precipitate actions can be 'catastrophic' when they are not negotiated and agreed with the life partner. (eg. extra-marital affairs, foolhardy investments, clandestine gambling, or attempts to recapture youth through re-engagement with risky physical pursuits to 'prove' that they 'still have what it takes' in spite of being well out of condition etc).



Stereotypical Behaviours - Male and Female

The male 'menopause' is not infrequently characterised by forced and selfish actions, increased alcohol use and/or sexual affairs.

The female 'menopause' might involve compensatory activities (shopping, dressing, eating, 'forced' exercise/dieting, affairs ...)

Suggested additional reading:
A Proving of Chocolate

But within these general tendencies, different personality types psychologically balance their needs and appetites, in different ways, against feelings of guilt, regret, neglected duty, notions of sinfulness or taboo, jealousy, social embarrassment and so on.

Beyond the Crisis

Studies show that long-term relationships that survive the years 45-60, however, are more likely to survive until death or infirmity intervene. The years from 60 onward are often characterised by the prospect of new horizons provided by retirement, a rejigging of life's expectations, the reaffirmation of care for family and a new interest in the nurture and progress of grandchildren.

Some purely mineral remedy types, however, never fully regain their sense of enthusiasm, endeavour, curiosity, creativity or humour.

The Homeopathic Case Load and Patients in their Middle Years

Looking at the demographics of attendance at an NHS homeopathic clinic, it is clear that there is a peak in demand for services in the 'middle years'.

This begs the question of whether the struggles of the middle years that we have described above, tend to manifest in new and diverse functional symptoms and health concerns. Patients in their 50s are often reluctant to resort to long-term drug solutions for what they sometimes instinctively recognise as stress-mediated symptoms.

This may partly account for the burgeoning interest in these age groups regarding what homeopathy has to offer.

Those who know something about our speciality, expect a non judgmental and contextualised understanding of their problems, followed by individualised treatment and practical advice. All without any perceived stigma of psychological / psychiatric modelling or diagnostic labelling (or the threat of being fobbed off with long-term antidepressants!)

MONEY

MIND - AILMENTS FROM - money; from losing

Arn.^{br1,k13,ptk1,ptk2,st} *ars.*^{hr1,ptk1} *Aur.*^{k2,ptk1,vh,vh/dg,vhx1} *Calc.*^{gl1,fr,jsa} *dulc.*^{fd4,de} *Ign.*^{gl1,fr,jsa} *mez.*^{k13} *nat-m.*^{gl}
nux-v.^{jsa} *puls.*^{jsa} *Rhus-t.*^{gl1,fr,jsa} *Sars.*^{hr1} *stann.*^{gl} *Verat.*^{gl1,fr,jsa}

MIND - AILMENTS FROM - pecuniary loss

MIND - AMBITION - increased - money; to make

ars.^{gl1,fr} *calc.*^{gl1,fr} *carc.*^{mlr1} *lyc.*^{gl1,fr} *nux-v.*^{gl1,fr} *sulph.*^{gl1,fr}

MIND - AMBITION - loss of - money; to make

chinin-ar.^{gl} *kali-c.*^{gl} *merc.*^{gl} *nat-c.*^{gl}

MIND - ANXIETY - money matters, about

Agath-a.^{nl2} *aids.*^{nl2} *aq-mar.*^{rbp6} *aur.*^{fy2} *bac.*^{bn} *bamb-a.*^{stb2,de} *Bry.*^{vh,vh/dg,vhx1} *calc.*^{mrr1} *calc-f.*^{a1,hr1,kr1}
calc-sil.^{k13,k2} *chinin-s.*^{mrr1} *choc.*^{srj3} *dulc.*^{fd4,de} *fuma-ac.*^{ry4} *ign.*^{fy2} *kali-p.*^{fy2} *kali-s.*^{fd4,de} *moni.*^{rfm1}

positr.^{nl2} *spong.*^{fd4,de}

MIND - CAREFREE - money; about

adam.^{srj}

MIND - CARES, full of - money; about

aur.^{mf33} *ozone.*^{sde2}

MIND - DELUSIONS - money - counting money; he is

alum.^k *bell.*^k *cycl.*^k *mag-c.*^k *zinc.*^k

MIND - DELUSIONS - squanders money

falco-pe.^{nl2} *Verat.*^{hr1,kr1}

MIND - FEAR - poverty, of - spending money in order not to be short of it in future; fear of

Nux-v.^{gl1,fr} *spong.*^{fd4,de} *stann.*^{gl1,fr}

MIND - GAMBLING - passion for gambling - make money; to

bell.^{a1} *calc.*^{gl1,fr} *lyc.*^{gl1,fr} *mag-m.*^{gl1,fr,mtf33} *Merc.*^{gl1,fr} *Nat-c.*^{gl1,fr} *plat.*^{gl1,fr} *puls.*^{gl1,fr} *staph.*^{gl1,fr} *sulph.*^{gl1,fr}

MIND - GESTURES, makes - hands; involuntary motions of the - counting money; as if

calc.^{gl1,fr,mtf33} *Hyos.*^{vh,vh/dg,vhx1} *nux-v.*^{gl1,fr} *staph.*^{gl1,fr,mtf33}

MIND - GRIEF - money; from losing

aur.^{mp1} *calc-f.*^{mrr1} *mez.*^{mp1} *psor.*^{mp1}

MIND - INDIFFERENCE - money; to making

chin.^{gl1,fr} *cob.*^{ptm1} *kali-c.*^{gl1,fr} *merc.*^{gl1,fr} *nat-c.*^{gl1,fr} *sep.*^{gl1,fr}

MIND - KLEPTOMANIA - money, steals

art-v.^{ckh1} **CALC.**^{k,k12,mtf33,ptk1} *cur.*^{ckh1} *nux-v.*^{ckh1} **PULS.**^{h1,k12,mtf33} *tarent.*^{ckh1}

MIND - SADNESS - money - problems with money; about

podo.^{fd3,de}

MIND - SQUANDERING - money

agar.^{gl1,fr} *alum.*^{gl1,fr} *Bell.*^{gl1,fr} *calc.*^{gl1,fr} *caust.*^{gl1,fr} *con.*^{gl1,fr} *dulc.*^{fd4,de} *hep.*^{gl1,fr} **MERC.**^{gl1,fr} *Nux-v.*^{gl1,fr}

petr-ra.^{shn4} *spong.*^{fd4,de} *stram.*^{gl1,fr} *sulph.*^{gl1,fr} *Syph.*^{sl} *taosc.*^{iwa1} *verat.*^{hr1,k,mrr1}

SLEEP - SLEEPLESSNESS - money; from loss of

stann.^{gl1,fr}

DREAMS - JOKE, relating a - money; about

lac-e.^{hm2}

DREAMS - MONEY

alum.^{bg2,k} *apeir-s.*^{mik9,de} *aq-mar.*^{rbp6} *bamb-a.*^{stb2,de} *bros-gau.*^{mrc1} *Cycl.*^{b2,de,b7,de,bg2,k} *cypra-eg.*^{sde6,de}

dioxi.^{rbp6} *dulc.*^{fd4,de} *hydrog.*^{srj2} *kola.*^{stb3} *lac-e.*^{hm2} *lac-h.*^{sk4,sze9} *mag-c.*^k *mag-m.*^{b4,de,k} *maias-l.*^{hm2}

melal-alt.^{gya4} *musca-d.*^{szs1} *nept-m.*^{isd2,fr} *orot-ac.*^{ry4} *oxal-a.*^{ry4} *phos.*^k *positr.*^{nl2} *puls.*^{b2,de,bg2,k}

spong.^{fd4,de} *suis-pan.*^{ry4} *tritic-vg.*^{fd5,de} *vanil.*^{fd5,de} *zinc.*^{bg2} *zinc-o.*^{j5,de}

DREAMS - MONEY - disputing about money

chin.^{slp,xxx} *chin-b.*^{slp} *lac-h.*^{sze9} *maias-l.*^{hm2} *petr-ra.*^{shn4} *positr.*^{nl2}

[GO BACK TO PAGE 4](#)

SEX

MIND - ANGER - alternating with - lasciviousness

MIND - DELUSIONS - lascivious

ambr.^{a1,h1,j5,de} bell.^{j5,de} calc.^{j5,de} sil.^{j5,de} **Stram.**^{j5,de} verb.^{hr1,kr1}

MIND - EXCITEMENT - lascivious, with painful nocturnal erections

Merc.^{kr1}

MIND - FANCIES - lascivious

am-c.^{a1,k} **Ambr.**^{a1,h1,k} anac.^{a1,k} androc.^{srj1} arund.^k aur.^{a1,h2,k} bell.^k bufo.^{mtf11} **Calad.**^{hr1,k2,kr1} **Calc.**^{a1,h2,k}calc-s.^{a1} camph.^{a1,hr1,kr1} **Canth.**^{j5,de} carb-v.^{k,mtf33} **Chin.**^k cod.^{hr1,kr1} **Con.**^{gl1,fr,hr1,j5,de,kr1} cop.^{a1,hr1,kr1}crot-c.^{sk4} dig.^{a1,k} **Graph.**^{a1,k} hipp.^{a1,k} ign.^k irid-met.^{srj5} **Kali-br.**^{hr1,kr1} **Lach.**^{j5,de} lil-t.^k **Lyc.**^{a1,k} lyss.^{hr1,kr1}nat-c.^{hr1,kr1} **Nat-m.**^{hr1,j5,de,kr1} **Nuph.**^{a1,hr1,kr1} nux-v.^{gl1,fr} **Op.**^{a1,k} **Orig.**^{hr1,kr1} plat.^{gl1,fr} psor.^{gl1,fr} sang.^k**Sel.**^{j5,de,kr1} sep.^{hr1,j5,de} **Sil.**^{hr1,kr1} sin-n.^{hr1,kr1} staph.^{gl1,fr,mrr1} stram.^{j5,de} tarent.^{k13,k2} thuj.^{a1,k} **Ust.**^{hr1,kr1}vanil.^{fd5,de} verb.^{a1,k} yuc.^{a1} **Zinc.**^{hr1,kr1}

MIND - HYSTERIA - lascivious

agn.^{hr1,kr1} mosch.^k **Plat.**^{k,ptk1} **Tarent.**^{a1,k,ptk1}

MIND - INSANITY - lascivious

hyos.^{bg2,ptk1} **Plat.**^{b4a,de} tarent.^{hr1} **Verat.**^{bg2}

MIND - LASCIVIOUS

Acon.^{bg2,kr1} agar.^k agath-a.^{nl2} agn.^{ptk1} aloe.^k **Ambr.**^{b7a,de,k} androc.^{srj1} ang.^{b7a,de} ant-c.^{b7,de,b7a,de,kg2,c1}**Apis.**^{bg2,k} aq-mar.^{skp7} arund.^k aster.^{j3,kr1} aur.^k bell.^{bg2,gl1,fr} borx.^k bov.^{a1} **Bufo.**^{bg2,sf1,de} **Calad.**^{bg2,k}**Calc.**^{b4a,de,kg2,k} calc-p.^{sf1,de} calc-s.^k calc-sil.^{k2} camph.^{a1,kg2} **Canni.**^{sf1,de} cann-s.^{b7a,de,kg2,sf1,de}**Canth.**^{b7,de,b7a,de,kg2,br1,k,ptk1} carb-an.^{kg2} **Carb-v.**^{b4,de,kg2,k} carl.^{a1} **Caust.**^{gl1,fr,mtf33} cedr.^{br1,c1} cere-s.^{a1}**Chin.**^{b7,de,b7a,de,kg2,k} coc-c.^k cod.^{a1} coff.^{b7,de,kg2} coloc.^{kg2} **Con.**^{kg2,k} cop.^k croc.^{kg2,sf1,de} des-ac.^{j3}**Dig.**^{kg2,k} dulc.^{kg2} falco-pe.^{nl2} **Fl-ac.**^{kg2,k,mrr1} **Gamb.**^{mrr1} **Graph.**^{b4a,de,kg2,k} hydrog.^{srj2}**HYOS.**^{b7a,de,kg2,br1,k,ptk1,tl1} hyper.^k ign.^{b7a,de,kg2,k} iod.^{kg2} irid-met.^{srj5} kali-br.st kali-c.^{kg2}**LACH.**^{b7,de,b7a,de,kg2,k,ptk1} **LIL-T.**^{kg2,k,ptk1} lyc.^{kg2,k,ptk1} lyss.^k m-ambo.^{b7,de,b7a,de} m-arct.^{a1} meny.^{b7a,de,kg2}merc.^{kg2,k} mosch.^{b7,de,kg2,k} **Murx.**^{kg2,ptk1,sf1,de} nat-c.^{a1,kg2} nat-m.^{kg2,k} nat-s.^{mrr1} nit-ac.^{kg2,k} nuph.^{a1} nux-m.^{a1,kg2} nux-v.^{b7,de,b7a,de,kg2,c1} op.^{b7,de,kg2,k} **ORIG.**^{k,ptk1} ph-ac.^{gl1,fr} **PHOS.**^{kg2,k,ptk1} **PIC-AC.**^{kg2,k,ptk1}**PLAT.**^{b4a,de,kg2,k,ptk1} plb.^{kg2,sf1,de} plut-n.^{srj7} **Puls.**^{b7a,de,kg2,k} raja-s.^{j3} **Raph.**^{a1,k} rhus-t.^{b7,de,b7a,de,kg2} ruta.^{kg2}**Sabin.**^{kg2,sf1,de} sanic.^{kg2} sars.^{a1,kg2} **Sel.**^{kg2,k,ptk1} senec.^{kg2,k,ptk1} **Sep.**^{kg2,k,mtf33} **Sil.**^{kg2,k} spig.^{b7a,de,k}squil.^{kg2,ptk1} stann.^{a1,kg2,ptk1} **STAPH.**^{b7,de,b7a,de,kg2,k,mtf33,ptk1} staphycoc.^{ry4} **Stram.**^{b7,de,b7a,de,kg2,k,ptk1}sulph.^{kg2,gl1,fr} **Tarent.**^{k,tl1} tere-ch.^{j3} thuj.^{kg2} **Tub.**^{ckh1,st,vh,dg,vhx1} ust.^{sf1,de} **Verat.**^{b7,de,kg2,k,ptk1,tl1}verb.^{b7,de,kg2} zinc.^{kg2,k}

MIND - LASCIVIOUS - touch; women become lascivious at every

Murx.^{mrr1,sf1,de} **Plat.**^{mrr1}

MIND - MANIA - lascivious

calc-p.^{mp1} **Hyos.**^{br1} **Plat.**^{mp1} **Raph.**^{a1} stann.^{mp1} **Tarent.**^{mp1}

MIND - PLEASURE - lascivious ideas, only in

bell.^k[GO BACK TO PAGE 5](#)

MIND - PLEASURE - voluptuous

MIND - REMORSE - alternating with - lasciviousness

MIND - RESTLESSNESS - lascivious thoughts, during

graph.^{a1}

PROSTATE GLAND - EMISSION of prostatic fluid - lascivious thoughts, during

CON.^{k,ptk1} **Lyc.**^k **Nat-m.**^k **NIT-AC.**^{k,ptk1} **Ph-ac.**^k **Phos.**^k pic-ac.^k

PROSTATE GLAND - HEAVINESS - lascivious thoughts, during

graph.^k

MALE GENITALIA/SEX - ERECTIONS - wanting - fancies; with lascivious

sel.^{br1}

MALE GENITALIA/SEX - POLLUTIONS - dreams - without dreams - lascivious

ph-ac.^{ptk1}

SLEEP - FALLING ASLEEP - late - lascivious thoughts; from

calc.^{a2,kg2} dros.^{kg2}

SLEEP - SLEEPLESSNESS - thoughts - lascivious

DREAMS - LASCIVIOUS

arg-n.^{bro1} ars.^{bro1} **Canni.**^{bro1} canth.^{bro1} **Cob.**^{bro1} **Dios.**^{bro1} grat.^{a1} ham.^{bro1} **Hyos.**^{bro1} ign.^{bro1} lac-cp.^{sk4}lac-d.^{sk4} musca-d.^{szs1} nat-m.^{bro1} nit-ac.^{bro1} op.^{bro1} orig.^{a1,c1,h1,hr1,ptk2} petr-ra.^{shn4} ph-ac.^{bro1} **Phos.**^{bro1}sal-n.^{br1} sil.^{bro1} **Staph.**^{bro1} stront-c.^{sk4} thuj.^{bro1} ust.^{bro1} verat-v.^{bro1}

MARRIAGE / RELATIONSHIP

MIND - ABUSIVE - husband

thuj.^{ptk1}

MIND - ABUSIVE - husband - insulting; husband is - wife and children

lyss.^{a1} petr-ra.^{shn4}

MIND - ABUSIVE - husband - insulting; husband is - wife before children or vice versa

Anac.^{gl1.fr,vh} ars.^{gl1.fr,vh} **LACH.**^{gl1.fr,vh} nux-v.^{gl1.fr,vh} **VERAT.**^{gl1.fr,vh,vh/dg,vhx1}

MIND - ABUSIVE - husband - towards her husband

dulc.^{fd4.de} thuj.^{ckh1}

MIND - ANGER - husband; towards

Adam.^{srj5} aids.^{nl2} dulc.^{fd4.de} luna.^{kg1} ruta.^{fd4.de}

MIND - AVERSION - husband, to

adam.^{srj5} agn.^{cda} bamb-a.^{stb2.de} chir-fl.^{gya2} choc.^{srj3} **Glom.**^{hr1,k,ptk1} kali-c.^{st1} kali-p.^k **Kola.**^{stb3} **Nat-c.**^{k,ptk1}nat-m.^k nat-sil.^{fd3.de} pitu-a.^{ft} sal-fr.^{sle1} **SEP.**^{k,ptk1,sne} thuj.^{ckh1,ptk1} verat.^{hr1,k}

MIND - AVERSION - wife, to his

ars.^{ckh1,k2,ptk1,st} **Fl-ac.**^{k13,k2,st1,vh} nat-s.^{ckh1,k2,ptk1,st} plat.^{ckh1,k2,ptk1,st} puls.^{k2,st} sal-fr.^{sle1} staph.^{ckh1,k2,ptk1,st}

MIND - CARESSING - husband and child, then pushes them away; caresses

Anac.^{c1,hr1,kr1,rb3,wd2}

MIND - CENSORIOUS - silent; disposition to be faultfinding or - husband; of

lac-lup.^{hm2}

MIND - DELUSIONS - dead - corpse - husband, corpse of

calc-sil.^{k2} plb.^k

MIND - DELUSIONS - husband; he is not her

Anac.^{k,t1}

MIND - DELUSIONS - jealousy - lovers concealed behind stove; wife has

Stram.^{kr1}

MIND - DELUSIONS - man - old men - alone and lost after the death of their wives

ratt-norv-s.^{hm2}

MIND - DELUSIONS - murdering; he is - husband and child; she is about to murder her

kali-br.^k

MIND - DELUSIONS - neglected - he or she is neglected - husband; by her

Stram.^{ckh1,hr1,ptk1}

MIND - DELUSIONS - wife - faithless; wife is

hyos.^{k,ptk1} stram.^{k,ptk1}

MIND - DELUSIONS - wife - run away from him; wife will

staph.^{k,ptk1}

MIND - DESIRES - full of desires - husband; for

vero-o.^{ry3,vml3}

MIND - DISGUST - body; of the - others; of the body of - husband's odor

sep.^{mrr1}

MIND - ESTRANGED - husband; from her

aids.^{nl2} falco-pe.^{nl2} nat-c.^{hr1}

MIND - ESTRANGED - wife, from his

ars.^k falco-pe.^{nl2} irid-met.^{srj5} melal-alt.^{gya4} nat-s.^k phasco-ci.^{rbp2} plat.^k staph.^k

MIND - FEAR - happen, something will - husband; that he would never return

ars.^{fyz} bar-c.^{fyz} caust.^{fyz} **Plat.**^{k,mrr1,ptk1} sep.^{fyz} vanil.^{fd5.de}

MIND - FEAR - neglected, of being - wife; by his

musca-d.^{szs1}

MIND - FEAR - separation; of - husband; from

ign.^{mtf} puls.^{mtf} sep.^{mtf} staph.^{mtf}

MIND - FORSAKEN feeling - beloved by his parents, wife, friends; feeling of not being

aids.^{nl2} **Ars.**^{gl1.fr,mtf33} calc.^{gl1.fr} camph.^{mrr1} lac-h.^{mtf,sk4} lyc.^{gl1.fr,mtf33} **Mag-c.**^{gl1.fr,mtf33,st} moni.^{rfm1} nat-m.^{gk,mtf33} phos.^{gk} **PULS.**^{mrr1} sep.^{gl1.fr} sil.^{gl1.fr,mtf33} sulph.^{gl1.fr} **Thuj.**^{mrr1} **Tritic-vg.**^{fd5.de} vanil.^{fd5.de}

MIND - GIFTS to his wife or son; husband making no

LACH.^{gl1.fr}

MIND - HATRED - husband; of

dulc.^{fd4.de} **Lac-leo.**^{hm2} luna.^{kg1}

MARRIAGE / RELATIONSHIP cont.

MIND - INDIFFERENCE - husband; towards

falco-pe.^{nl2} luna^{kg1} melal-alt.^{gya4} podo.^{fd3.de} sacch-a.^{gmj3}

MIND - IRRITABILITY - husband; towards

adam.^{srj5} aids.^{nl2} bamb-a.^{stb2.de} dulc.^{fd4.de} kali-p.^{fd1.de} luna^{kg1} nat-sil.^{fd3.de} symph.^{fd3.de} ulm-c.^{jsj8}
vanil.^{fd5.de}

MIND - JEALOUSY - accuses - husband

MIND - JEALOUSY - accuses - wife of being faithless

Stram.^{hr1,kr1}

MIND - JEALOUSY - brutal from jealousy; gentle husband becoming

calc.^{gl1,fr} lach.^{gl1,fr} nux-v.^{gl1,fr} sulph.^{gl1,fr}

MIND - JEALOUSY - strike his wife; driving to

Calc.^{ckh1,vh,vh/dg,vhx1} lach.^{gl1,fr,vh} nux-v.^{gl1,fr,vh} sulph.^{ckh1,vh}

MIND - KILL; desire to - husband; impulse to kill her beloved

Merc.^k *Nux-v.*^k *Plat.*^{k,mrr1}

MIND - LOVE - husband; for

limen-b-c.^{hm2}

MIND - QUARRELSOME - family, with her - husband; to

lac-lup.^{hm2}

MIND - SADNESS - quarrel with husband, after

Anac.^{hr1,kr1} tritic-vg.^{fd5.de}

MIND - THREATENING - kill; to - wife and children

Hep.^{kr1}

MALE GENITALIA/SEX - ERECTIONS - wanting - wife; with his

lyc.^{mrr1}

FEMALE GENITALIA/SEX - SEXUAL DESIRE - diminished - husband absent; when

galeoc-c-h.^{gms1}

DREAMS - DEAD; of the - wife

aran-ix.^{mg1.de}

DREAMS - DEATH - relatives; of - husband; of her

bung-fa.^{mf} dream-p.^{sdj1}

DREAMS - EXPOSING - husband is exposing his genitals

bung-fa.^{mf}

DREAMS - FALLING - water, into - husband is falling

nept-m.^{isd2.fr}

DREAMS - NAKED people - husband; her

bung-fa.^{mf}

DREAMS - PREGNANT - husband is; her

plut-n.^{srj7}

DREAMS - SEXUAL - seduced wife's sister

maias-l.^{hm2}

DREAMS - THEFT - accused of; being - wife accused of theft

lac-leo.^{hm2}[BACK TO PAGE 3](#)

SELF

MIND - AILMENTS FROM - self-confidence; from want of

carc.^{sst2}

MIND - ANGUISH - self-destruction; leading to

aur.^{fyz}

MIND - CONFIDENCE - want of self-confidence

abies-c.^{oss4} acer-circ.^{oss} adam.^{srj5} agath-a.^{nl2} agn.^{b7.de,b7a.de,k} aids.^{nl2} aloe.^{sne} alum.^k **Am-br.**^{vh1} am-

c.^{gl1.fr} am-m.^{gl1.fr} ambr.^{gl1.fr,vh1} amp.^{rly4} **ANAC.**^{al4,br1,gtk1,k,ptk1,sne} anan.^k ang.^{b7.de,b7a.de,k} anh.^{mg1.de,sp1}

anthraq.^{rly4} **Aq-mar.**^{mgm,rbp6} arb-m.^{oss1} arg-n.^{ckh1,k,mtf33,ptk1,sne1} arizon-l.^{nl2} arn.^{oss} ars.^{bcn,ptk1} atp.^{rly4}

Aur.^k aur-i.^{k2} **Aur-m-n.**^{wbt2} aur-s.^{k2} bamb-a.^{stb2.de} bar-act.^{a1,br1,sf1.de} bar-ar.^{sk2} **BAR-**

C.^{b4a.de,br1,gtk1,mrr1,mtf33,vh} bar-i.^{oss} bar-s.^{zr} bell.^k **Bry.**^k buth-a.^{sp1} calc.^k calc-sil.^{br1,k2,mp4,mtf33} calen.^{mgm}

canth.^{b7.de,b7a.de,k} carb-an.^k carb-v.^{k,mtf33} **Carc.**^{mlr1,mtf33,sst2} caust.^k cerstig-w.^{mtf11} **Chin.**^{k,mtf33} chlor.^k

choc.^{srj3} cob.^{kr1,ptk2,ptm1} coca-c.^{sk4} cocc.^{a1,c1} coli.^{rly4} con.^{ckh1,pcr} cystein-l.^{rly4} dendr-pol.^{sk4} des-ac.^{rbp6}

dioxi.^{rbp6} dream-p.^{sdj1} dros.^k **Dulc.**^{fd4.de} dys.^{ckh1,fm1,pte1} falco-pe.^{nl2} fic-m.^{gya1} fuma-ac.^{rly4} galla-q-r.^{nl2}

gard-j.^{vlr2} gels.^k germ-met.^{srj5} graph.^{vml1,ni} haliae-lc.^{srj5} ham.^{fd3.de} hydrog.^{srj2} hyos.^{ign} ina-i.^{mlk9.de}

iod.^k irid-met.^{srj5} kali-br.^{ckh1} **Kali-c.**^k kali-n.^k kali-p.^{fd1.de,mrr1} **Kali-s.**^{k1,mrr1,vh/dg,vhx1,vml1,ni} **Kali-**

sil.^{k2,mtf33,vh/dg,vhx1} **Kola.**^{stb3} **Lac-c.**^{br1,k,mrr1} lac-del.^{hnm2} **Lac-e.**^{hnm2} lac-h.^{htj1,sze9} lac-leo.^{sk4} lach.^{k,mrr1} lar-

d.^{mtf11} lavand-a.^{cl1} limest-b.^{es1} **Lyc.**^{br1,k,mrr1,mtf33,pfa2,ptk1,sne} manc.^{vh} **Med.**^{ckh1,ptk2,vh,vh/dg,vhx1} melal-alt.^{gya4}

merc.^{Moni.}^{rfm1} morph.^{oss} mur-ac.^k naja.^{kr1,sf1.de} nat-c.^k **Nat-m.**^{gl1.fr,k1,mtf33} nat-sil.^k nit-ac.^k nitro-o.^{a1}

Nux-v.^{b7.de,k,vh/dg,vhx1} olib-sac.^{wmh1} olnd.^{b7.de,b7a.de,k,ptk1} op.^k ozone.^{sde2} **Pall.**^{k,vh/dg,vhx1} pers.^{jj} pert-vc.^{vk9}

Petr.^{gl1.fr,vh} **Ph-ac.**^{gg} phasco-cl.^{rbp2} phos.^{k,mrr1} pic-ac.^{ptk1,ptk2} pieri-b.^{mlk9.de} pin-con.^{oss2} plb.^k polys.^{sk4}

positr.^{nl2} pseuts-m.^{oss1} psor.^{dgt,gd1,mtf33} **Puls.**^{k,mtf33} **Pycnop-sa.**^{mrz1} rad-br.^{sz8} ran-b.^k rhod.^{kgp5} rhus-

g.^{tm03} **Rhus-t.**^{k,vh/dg,vhx1} ruta.^k sacch.^{sst1} sacch-a.^{fd2.de} sal-fr.^{sle1} santin.^{a1} scler.^{mtf11} sep.^{b4a.de,gk}

SIL.^{gvt2,k1,mrr1,ptk1,st,t1,1,vh} staph.^{gl1,fr,j,mrr1,vh} stram.^{b7a.de,k} stront-c.^{sk4} sul-ac.^k sul-i.^{k2} sulph.^{k,mrr1} sumb.^{a1}

SYMPH.^{fd,fd3.de} syp.^{mtf33,vh} tab.^k tax-br.^{oss1} thea.^{a1} ther.^{k,ptk1} thuj.^{mlk1,mrr1,oss} **Tritic-vg.**^{fd5.de} ulm-c.^{jsj8}

urol-h.^{nwt} vanad.^{dx} **Vanil.**^{fd5.de} verat.^{gl1,fr} verb.^k viol-t.^{b7.de,k} vip.^{fkr4.de} visc.^{ckh1} zinc.^{k,mtf33}

MIND - CONFIDENCE - want of self-confidence - self despising and feelings of inadequacy in the eyes of others, with

arizon-l.^{nl2}

MIND - CONFIDENCE - want of self-confidence - self-depreciation

anac.^{mrr1,mtf} anh.^{mtf} **Ars.**^{mtf} bar-act.^{mtf} **Bar-c.**^{vh1} calc.^{hu2} calc-s.^{mtf} cob.^{kr1,mtf} cocain.^{mtf} dulc.^{fd4.de} falco-

pe.^{mtf} gels.^{mtf} germ-met.^{mtf} haliae-lc.^{mtf} hydrog.^{srj2} irid-met.^{srj5} kali-p.^{mtf} lac-c.^{br1,mrr4,mtf} lach.^{mtf} **Lyc.**^{mtf}

merc.^{mtf} mur-ac.^{mtf} naja.^{bg2,kr1,mtf33} **Nat-c.**^{mtf} **Nux-v.**^{mtf} **Pall.**^{mtf} phos.^{mtf} psor.^{mrr1} santin.^{mtf} **Sil.**^{mtf21}

sulph.^{bg2,kr1} thuj.^{mtf} tub.^{mtf} tung-met.^{mtf} ulm-c.^{jsj8} vanil.^{fd5.de}

MIND - CONTEMPTUOUS - self, of

agath-a.^{nl2} agn.^{bro1,k,ptk1} aur.^{bro1,ptk1} cop.^k falco-pe.^{nl2} lac-c.^{bro1} thuj.^{bro1}

MIND - CONTENT - group; with an uninterrupted flow between self and

aids.^{nl2}

MIND - CONTENT - partner; with an uninterrupted flow between self and

aids.^{nl2}

MIND - DELUSIONS - double - being - conquer the other; there were another self and he is not sure which will

op.^{rb2}

MIND - DELUSIONS - double - being - controls the other; one self

Cann-i.^{br1}

MIND - DELUSIONS - double - being - outside of patient; there were a second self

Bapt.^{hr1,rb2,vh1} tab.^{rb2}

MIND - DELUSIONS - double - being - watching his other self playing; his real conscious self seemed to be

nux-m.^{c1}

MIND - DELUSIONS - separated - floating in his inner self; he is

irid-met.^{srj5}

MIND - ECCENTRICITY - alternating with - contemptuousness - self, of

agn.^{js5.de}

MIND - ESTRANGED - self, from

aq-mar.^{rbp6} falco-pe.^{nl2} **TRITIC-VG.**^{fd,fd5.de} **Vanil.**^{fd5.de}

SELF cont.

MIND - FEAR - self-control, of losing

alum.^{gk,sk} **Arg-n.**^{k,ptk1} bamb-a.^{stb2,de} cann-i.^{bng} crot-c.^{sk4} cupr.^{mtf,sh} **Cupr-act.**^{kr1} cypra-eg.^{sde6,de} des-
ac.^{rbp6} **GELS.**^{k,kl2,ptk1} germ-met.^{srj} **Merc.**^{kr1} mur-ac.^{h2} nux-v.^{gg} ozone^{sde2} rhod.^{kpg5,mtf} **Staph.**^{k,ptk1}
sulph.^{gg} thea^{gg} thuj.^{gk}

MIND - HAUGHTY - look, self-contented

ferr.^{hr1,kr1} ferr-ma.^{a1,j5,de}

MIND - HAUGHTY - wounded self-esteem; wishes to be flattered

PALL.^{kr1,ptk1,t11} plat.^{ptk1,t11} puls.^{vh} verat.^{ptk1}

MIND - INJURING himself - shooting himself from satiety; must use self-control to prevent

Nat-s.^{c1,k}

MIND - INTERFERENCE - self; by talking of

eric-vg.^{mtf11}

MIND - LOQUACITY - self-satisfied

par.^{j5,de}

MIND - MERGING OF SELF with one's environment

Anh.^{mg1,de,mtf,sp1,vh,dg,vhx1} cann-i.^{mtf} carc.^{mtf} hydrog.^{srj2} lac-c.^{mtf} lac-mat.^{mtf} stram.^{mtf}

MIND - SELF-CONTROL - alternating with - loss of self-control

nicc-met.^{sk4}

MIND - SELF-CONTROL - loss of self-control

agar.^{mtf} anac.^{ptk1} androc.^{srj1} anh.^{sp1} arg-met.^{ptk1,ptk2} arg-n.^{mrr1,ptk1,ptk2} caust.^{k2,ptk1,ptk2,sp1} cham.^{mtf33}crot-c.^{sk4} lac-del.^{hm2} lac-h.^{htj1,sk4} lac-lup.^{hm2} **Lach.**^{kr1} olnd.^{ptk1} op.^{br1} ozone^{sde2} petr-ra.^{shn4} sil.^{kr1}staph.^{ptk1,ptk2} sulph.^{hr1} tarent.^{bg,ckh1,mtf33,ptk1,ptk2} tub.^{mtf}

MIND - SELF-CONTROL - loss of self-control - as if going to lose self-control

gels.^{rb2} lact.^{rb2} olib-sac.^{wmh1}

MIND - SELF-DECEPTION

act-sp.^{hr1,kr1,vh1}

MIND - SELF-DENIAL

agar.^{zr} podo.^{fd3,de} staph.^{zr}

MIND - SELF-DESTRUCTIVE

aur.^{br1} haliae-lc.^{srj5}

MIND - SELF-INDULGENT

marb-w.^{es1} plb.^{mrr1} positr.^{nl2}

MIND - SELF-SATISFIED

carl.^{c1} fl-ac.^{gt} olib-sac.^{wmh1} phasco-ci.^{rbp2} podo.^{fd3,de} positr.^{nl2} sacch-a.^{fd2,de}

MIND - SPACED-OUT feeling - fog between self and other; sensation as if

lac-del.^{hm2}

MIND - WALKING - self-sufficient impression of importance; walks along with a

ferr-ma.^{a1} ulm-c.^{jsj8}

MIND - WILL - loss of will power - insight, self-awareness; with increased

anh.^{sp1}

DREAMS - INJURIES - self-inflicted

nicc.^k

DREAMS - NAKEDNESS - wraps self in rug

lac-leo.^{hm2}[GO BACK TO PAGE 4](#)

DEATH

MIND - AILMENTS FROM - death of loved ones

ACON.^{lmj} **Ambr.**^{ckh1,k,ptk1,ptk2} anthraci.^{vh} **ARS.**^{lmj} calc.^{lmj} caps.^{lmj} carc.^{lmj} caust.^{lmj} gels.^{lmj} **IGN.**^{lmj} **Kali-br.**^{lmj} **LACH.**^{lmj} lyc.^{pcr} nat-m.^{fd,lmj} nat-s.^{mrr1} nux-v.^{lmj} **OP.**^{lmj} **PH-AC.**^{lmj} plat.^{c1,ckh1,lmj,ptk1,ptk2} podo.^{fd3,de} spig.^{gk} **STAPH.**^{lmj} sulph.^{lmj} tritic-vg.^{fd5,de} **VANIL.**^{fd,fd5,de} verat.^{lmj}

MIND - CHEERFUL - death, while thinking of

aur.^{k,kr1} aur-m-n.^{wbt2}

MIND - DEATH - agony before death

ACON.^{bg} ant-t.^{ptk1} **Ars.**^{ptk1} aur.^{sne} carb-v.^{ptk1} carc.^{mrr1} con.^{sne} gels.^{bg} lach.^{sne} **LAT-M.**st oscilloc.^{jl2} plat.^{bg} psor.^{sne} spig.^{sne} syph.^{sne} tarent-c.^{ptk1}

MIND - DEATH - presentiment of - calmly thinks of death

zinc.^{k,mrr1,ptk1}

MIND - DEATH - presentiment of - sudden death, of a

Cench.^{st1}

MIND - DEATH - thoughts of - father; the death of his

positr.^{nl2} tritic-vg.^{fd5,de}

MIND - DELIRIUM - death, talks about

Acon.^{hr1,kr1}

MIND - DELUSIONS - man - old men - alone and lost after the death of their wives

ratt-norv-s.^{hrn2}

MIND - DELUSIONS - specters, ghosts, spirits - death appears as a gigantic black skeleton

crot-c.^k crot-h.^{tl1}

MIND - DESPAIR - death - fear of; with - separate him from his children; death will

bamb-a.^{stb2,de}

MIND - FEAR - death, of

ACON.^{b7,de,b7a,de,bg2,br1,br01,k1,jl1,mta1,mtf11,ptk1,st,tl1} act-sp.^k adam.^{skp7} **Adren.**^{vh1} **Agn.**^{b7,de,b7a,de,bg2,br1,br01,k} aids.^{nl2} all-s.^k aloe.^k alum.^{bg2,k,tl1} alum-p.^{k2} am-c.^{b4,de,bg2,k} anac.^{b4a,de,bg2,br01,k} anan.^{k,vh1} anh.^{mng1,de,sp1} ant-c.^{k,tl1} ant-t.^k **Apis.**^{b7a,de,bg2,br01,k,tl1} aq-mar.^{rbp6} aran.^{jl3} **Arg-n.**^{br01,k,tl1} **Arn.**^{bg2,k2,ptk1,st,tl1} **ARS.**^{b4,de,b4a,de,bg2,br1,br01,k1,mtf33,ptk1,st,tl1} ars-h.^{vh} **Ars-s-f.**^{k2} asaf.^{bg2,k} asar.^{vh} aur.^{bg2,br1,br01,k} aur-ar.^{k2} aur-m-n.^{wbt2} aur-s.^{k2} bapt.^k bar-c.^{b4,de,bg2,k} bar-s.^{k2} **Bell.**^{b4,de,bg2,k} **Bism.**^{mrr1} **Bry.**^{b7,de,bg2,k} bufo.^{a1,bg2,k} **Cact.**^{bg2,br1,br01,k,ptk1} calad.^k **CALC.**^{b4,de,bg2,br01,k,ptk1,tl1} **Calc-ar.**^{k1,k2,st} calc-s.^k calen.^{mgm} camph.^{k,tl1} **Cann-i.**^{br01,gsd1,k,jl1,tl1} cann-s.^{bg} cann-xyz.^{bg2} canth.^k caps.^{b7,de,bg2,k} carb-an.^{j5,de} carb-v.^{k2} carb-n-s.^k **Carc.**^{mrr1} **Caust.**^{b4,de,bg2,k} chel.^{bg2,k} chin.^{b7a,de,j5,de} **CIMIC.**^{bg2,br01,k,mrr1,ptk1,tl1} **Cocc.**^{b7,de,b7a,de,bg2,k,tl1} **Coff.**^{b7a,de,bg2,k,tl1} con.^{bg2,k,tl1} cop.^k corv-cor.^{bdg} croc.^k **Crot-c.**^{k,sk4} culx.^{k2} **Cupr.**^{b7,de,b7a,de,bg2,k,ss13} cur.^k **Cycl.**^k cystein-l.^{ry4} **Dig.**^{b4,de,bg2,br01,k} diosm.^{br1} dros.^{a1} **Elaps.**^{vh,vh/dg,vhx1} fago.^{a1} ferr.^k ferr-ar.^k **Ferr-p.**^k **Fl-ac.**^k gard-j.^{vir2} **GELS.**^{bg2,br01,k,ptk1} glon.^{k,tl1} **Graph.**^{b4,de,b4a,de,bg2,br01,gl1,fr,k1,st,vh} haliae-lc.^{srj5} heli-n.^{mtf11} **Hell.**^{bg2,k} **Hep.**^{bg2,k} hydr.^{br01} hydr-ac.^{ptk1} hydrog.^{srj2} hyos.^{br01,k} ign.^{br01,k} iod.^{bg2,j5,de,sf1} ip.^{b7a,de,bg2,k} iris.^k **KALI-AR.**^{k,vh/dg,vhx1} **Kali-c.**^{b4,de,bg2,br01,k,ptk1,tl1} kali-fcy.^{a1} **Kali-i.**^{bg2,k} **Kali-n.**^{b4a,de,bg2,k,ptk1} kali-p.^k kali-s.^k ketogl-ac.^{ry4} **LAC-C.**^{br01,k,mrr1,mtf33,ptk1,tl1} **Lach.**^{bg2,k} lat-m.^{bnm6,gm1,jl3,st1} led.^k **Lil-t.**^{br01} lob.^{br1,k,mrr1} **Lyc.**^{b4,de,bg2,k,tl1} mag-s.^{k,sp1} **MANC.**^{gk} med.^{br01,k,tl1} **Merc.**^{gl1,fr,j5,de,mrr1} mimi-g.^{mtf11} **Mosch.**^{b7a,de,bg2,k,mtf11,ptk1} mygal.^{br1,k} naja.^{br01} nat-c.^{a1,j5,de} **Nat-m.**^{bg2,br01,gl1,fr,k1,st} nat-p.^{mrr1} **NIT-AC.**^{b4,de,bg2,br1,br01,k,mrr1,ptk1,tl1} nux-m.^{bg2,k} **NUX-V.**^{b7,de,b7a,de,bg2,br01,k,vh/dg,vhx2} oci-sa.^{sk4} **Op.**^{b7,de,b7a,de,bg2,k,tl1} ox-ac.^k ozone.^{sde2} petr.^{bg2,k,mrr1} **Ph-ac.**^k phase.^{br01} **PHOS.**^{b4a,de,bg2,br01,k,mrr1,ptk1,tl1} phyt.^k **PLAT.**^{b4,de,b4a,de,bg2,br01,k,kr1,mrr1,ptk1} pneu.^{jl2,jl3} podo.^{bg2,br01,k} pot-e.^{ry4} **Psor.**^{br01,k,rb3,tl1} **Puls.**^{b7,de,bg2,br01,k} rad-br.^{sze8} raph.^k rheum.^{bg2,k} **Rhus-t.**^{b7,de,b7a,de,bg2,br01,k} rob.^k **Ruta.**^{b7a,de,mrr1} sabad.^{br01} **Sec.**^{bg2,br01,k} sep.^{br01,k} sium.^{a1} **Spong.**^{bg2,k} squil.^{b7,de,b7a,de,bg2,k} stann.^{br01} staph.^{br01,gl1,fr} still.^{br01} stram.^{b7a,de,bg2,k,mrr1} sulph.^{bg2,k} symph.^{fd3,de} syph.^{br01,gb,jl2} tab.^{bg2,k,mtf11} tarax.^k tarent.^{bg2,k} trach.^{a1} tril-p.^k tritic-vg.^{fd5,de} tub.^{gb} **Vanil.**^{fd5,de} vario.^{a1,al2} **Verat.**^{b7,de,bg2,br01,k,tl1} verat-v.^{bg2,k} vinc.^k visc.^{sp1} xan.^{c1} zinc.^{bg2,k} zinc-p.^{k2}

MIND - FEAR - death, of - desire for death; fear with

Aur.^{kr1,sne}

MIND - FEAR - death, of - impending death; of

acon.^{gl1,fr,tl1} agn.^{gt} am-c.^{kr1} arg-n.^{tl1} **Ars.**^{gl1,fr} asaf.^{kr1} **BELL.**^{gl1,fr} bry.^{gl1,fr} calc.^{tl1} **CANN-I.**^{kr1} caps.^{kr1} carc.^{mrr1} caust.^{kr1} cimic.^{gt} **Croc.**^{kr1} cupr.^{gl1,fr,ss13} glon.^{gt} lach.^{gl1,fr} lat-m.^{bnm6} **Lob.**^{kr1} **MERC.**^{gl1,fr} nit-ac.^{gt} nux-v.^{gl1,fr} op.st **PHOS.**^{kr1} ruta.^{fd4,de} sec.^{gt} sep.^{gl1,fr} staph.^{gl1,fr} v-a-b.^{jl2,srb2,fr}

MIND - FEAR - death, of - sudden death; of

Arn.^k **Ars.**^k **Cench.**^{k2} cupr.^{ss13} lat-m.^{ah} tab.^{mg} thea.^k

[GO BACK TO PAGE 2](#)

DEATH cont.

MIND - HYPOCHONDRIASIS - fear of death; with

nit-ac.^{mrr1}

MIND - INSANITY - threatening destruction and death

TARENT.^{k1}

MIND - LAUGHING - alternating with - death; desire for

aur.^{j5.de}

MIND - LAUGHING - alternating with - fear of death

Plat.^{kr1}

MIND - LOATHING - general loathing - fear of death, during

cop.^{a1}

MIND - PROPHECYING - predicts the time of death

ACON.^{hr1,k} **Agn.**^{vh,vh/dg,vhx1} alum.st **Arg-n.**^{hr1,k,k1,st} hell.^{k13} **Lac-d.**^{hr1} thea.st

MIND - SADNESS - death of mother

limen-b-c.^{hrm2}

MIND - SADNESS - thinking - death; of

dendr-pol.^{sk4} des-ac.^{rbp6}

MIND - SUICIDAL disposition - fear - death; with fear of

alum.^{kr1} **Chin.**^{gl1.fr,sf1.de} **NIT-AC.**^{gl1.fr,vh3} **NUX-V.**^{al1,c1,hr1,kr1,lpc2} **Plat.**^{gl1.fr,kr1} rhus-t.^{gvt2,hr1,k2} **Staph.**^{gl1.fr,gtk1}tab.^{a1}

MIND - WEARY OF LIFE - fear of death, but

Kali-p.^{kr1} **Nit-ac.**^{k2,kr1} **Plat.**^{bg2,kr1} **Rhus-t.**^{kr1} **Spong.**^{fd4.de}

MIND - WEEPING - death; from thought of others' grief at her own

limest-b.^{es1}

FEMALE GENITALIA/SEX - PAIN - afterpains - fear of death, with

COFF.^{kr1,ptk1,st}

FEMALE GENITALIA/SEX - PAIN - labor pains - fear of death, with

Coff.^{kr1}

SLEEP - DEEP - fear of death, after

vario.^{hr1,kr1}

DREAMS - DANGER - death, of

agath-a.ⁿⁱ² bell.^{b4.de,bg2} carc.^{fd2.de} dulc.^{fd4.de} lac-h.^{sk4} lac-leo.^{sk4} lac-lup.^{hrm2} mag-m.^{j5.de} mang.^{a1}merc-c.^{b4a.de} oci-sa.^{sk4} plut-n.^{srj7} ran-b.^{j5.de} sul-ac.^{b4.de,bg2} sulph.^{b4.de,bg2,j5.de} thuj.^{b4.de,bg2}

DREAMS - DEAD; of the - children - embolism; being responsible for the death of one's child by causing an

limen-b-c.^{hrm2}

DREAMS - DEATH

allox.^{sp1,tpw3} alum.^k alum-p.^{k2} alum-sil.^{k2} alumn.^k am-c.^k anac.^{c1} arn.^{bro1,k} ars.^{bro1,k} ars-s-f.^{k2} aur.^kaur-ar.^{k2} aur-br.^{vh1} aur-s.^{k2} **Bit-ar.**^{wh1} brom.^k **Calc.**^{bro1,k} calc-f.^k calc-sil.^{k2} camph.^k cann-i.^{bro1}carb-n-s.^{k2} carc.^{gk6} castm.^k chel.^k chin.^{a1,k} chin-b.^{kr1,slp,st} chinin-ar.^{slp,xxx} cocc.^k coff.^{slp,xxx} coff-t.^{slp}con.^k cortico.^{sp1} corv-cor.^{bdg} crot-c.^{bro1} crot-h.^{bro1,k2} dendr-pol.^{sk4} dulc.^{fd4.de} elaps.^{bro1} ferr-i.^k fl-ac.^kgalla-q-r.ⁿⁱ² ger-i.^{rly4} grat.^k haliae-lc.^{srj5} hura.^k hydr-ac.^{c1} **Hydrog.**^{srj2} kali-ar.^k kali-c.^k kali-chl.^k kali-m.^{k2} kali-n.^k kali-s.^{k,mrr1} kali-sil.^{k2} kola.^{stb3} **LACH.**^{bro1,k,ptk1} luna.^{c1} lyc.^k mag-m.^k mag-s.^k maias-l.^{hrm2}merc-c.^k nat-m.^k nat-s.^{j5.de} neon.^{srj5} nicc.^{j5.de} nit-ac.^{bro1,k} oxal-a.^{rly4} ozone.^{ade2} paeon.^k plan.^k plat.^{j5.de}plut-n.^{srj7} ran-s.^{bro1} raph.^k rat.^k rauw.^{sp1} rheum.^{j5.de} rhus-v.^k ruta.^{fd4.de} saroth.^{sp1} sil.^k sin-a.^{svr6} sol-mm.^{a1} spong.^{a1} suis-pan.^{rly4} **Sulph.**^k tarent.^k thuj.^{a1,j5.de,t1} tritic-vg.^{fd5.de} vanil.^{fd5.de} ven-m.^{jl,rsj12}

DREAMS - DEATH - fear of death; losing the

irid-met.^{srj5}

DREAMS - DEATH - shadow of death; about the

haliae-lc.^{srj5}

Extractions from Synthesis undertaken using RADAR 10.1